

Anti-phospho-MCM2 (Ser40) Rabbit antibody



Catalog Number: 167772

Product name

Rabbit IgG

Anti-phospho-MCM2 (Ser40) Rabbit antibody

Applications

Specificity

WB, IHC-P, IP

Human, Mouse, Rat

Dilutions

Antibody description

WB: 1/1000

phospho-MCM2 (Ser40) Rabbit monoclonal antibody

IHC: 1/20

Preparation

IP: 1/20

Antigen: A synthetic phosphopeptide corresponding to residues surrounding Ser40 of human MCM2

Validations

Formulation

50nM Tris-Glycine(pH 7.4), 0.15M NaCl, 40%Glycerol, 0.01% sodium azide and 0.05% BSA

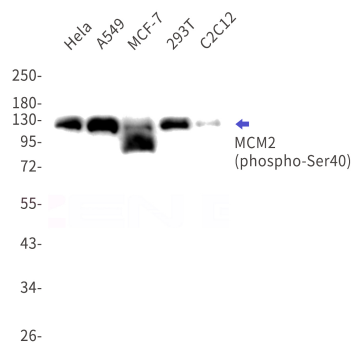
Storage

Store at 4°C short term. Store at -20°C long term. Avoid freeze / thaw cycle.

Clonality

Monoclonal

Ig Type



Western blot detection of phospho-MCM2(Ser40) in HeLa,A549,MCF-7,293T,C2C12 cell lysates using phospho-MCM2(Ser40) Rabbit mAb(1:1000 diluted).Predicted band size:102kDa.Observed band size:125kDa.