

# MTF2 antibody

Catalog Number: 112772

## Product name

MTF2 antibody

## Specificity

Human, Mouse, Rat; other species not tested.

## Antibody description

MTF2 Rabbit Polyclonal antibody. Positive WB detected in Jurkat cells, HepG2 cells, mouse brain tissue, mouse ES cells and 293 cells, mouse skeletal muscle tissue, rat lymph tissue. Positive IP detected in mouse skeletal muscle tissue. Positive IF detected in mouse ES cells. Positive IHC detected in human brain tissue. Observed molecular weight by Western-blot: 45-46kd, 55kd, 60-61kd

## Preparation

This antibody was obtained by immunization of MTF2 recombinant protein (Accession Number: NM\_001164392). Purification method: Antigen affinity purified.

## Formulation

PBS with 0.02% sodium azide and 50% glycerol pH 7.3.

## Storage

Store at -20°C. DO NOT ALIQUOT

## Clonality

Polyclonal

## Ig Type

Rabbit IgG

## Applications

ELISA, WB, IHC, IF, IP

## Dilutions

Recommended Dilution:

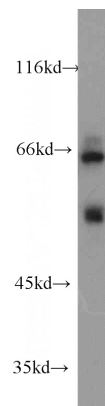
WB: 1:200-1:2000

IP: 1:200-1:1000

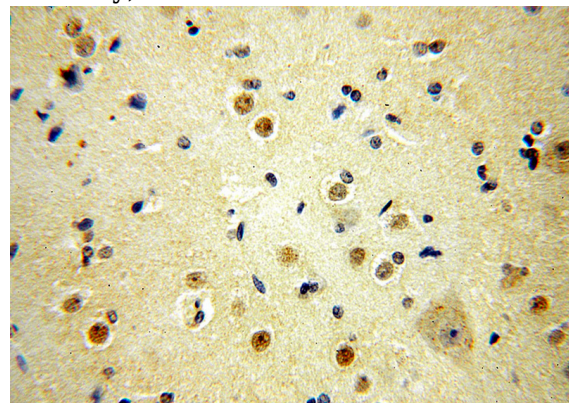
IHC: 1:20-1:200

IF: 1:10-1:100

## Validations



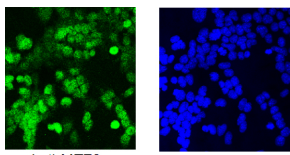
Jurkat cells were subjected to SDS PAGE followed by western blot with Catalog No:112772(MTF2 antibody) at dilution of 1:600



Immunohistochemical of paraffin-embedded human brain using Catalog No:112772(MTF2 antibody) at dilution of 1:50 (under 40x lens)

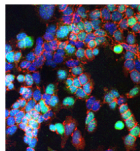
# MTF2 antibody

Catalog Number: 112772



Anti-MTF2

DAPI



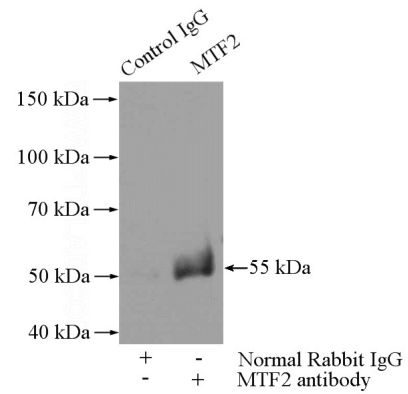
IF result of mouse ES cell.  
From Kevin Corbit.

MTF2

E-cadherin

DAPI

IF result of mouse ES cell From Kevin Corbit.



IP Result of anti-MTF2 (IP:Catalog No:112772, 4ug; Detection:Catalog No:112772 1:300) with mouse skeletal muscle tissue lysate 4000ug.