

General Information

Protein Construction

A DNA sequence encoding the mouse SERPINA11 isoform 1 (NP_955018.2) (Met 1-Gly 424) was expressed, fused with a polyhistidine tag at the C-terminus.

Organism

Mouse

Expression Host

Human Cells

QC Testing

Purity

> 94 % as determined by SDS-PAGE

Endotoxin

< 1.0 EU per μg of the protein as determined by the LAL method

Stability

Samples are stable for up to twelve months from date of receipt at -70°C

Predicted N terminal

Gln 22

Molecular Mass

The secreted recombinant mouse SERPINA11 comprises 414 amino acids and has a predicted molecular mass of 46.2 kDa. As a result of

glycosylation, the apparent molecular mass of rm SERPINA11 is approximately 60-65 kDa in SDS-PAGE under reducing conditions.

Formulation

Lyophilized from sterile PBS, pH 7.4

1. 5 % trehalose and mannitol are added as protectants before lyophilization.

2. Please contact us for any concerns or special requirements.

Usage Guide

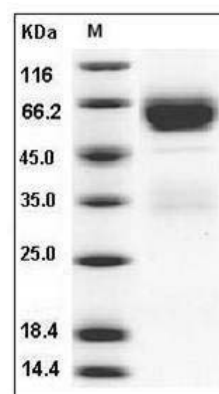
Storage

Store it under sterile conditions at -20°C to -80°C . It is recommended that the protein be aliquoted for optimal storage. Avoid repeated freeze-thaw cycles.

Reconstitution

Adding sterile water, prepare a stock solution of 0.25 mg/ml. Concentration is measured by UV-Vis.

SDS-PAGE



Mouse SerpinA11 Protein (His Tag) SDS-PAGE