

# Anti-DLL1 / Delta-like 1 antibody



Catalog Number: 102772

## Product name

Anti-DLL1 / Delta-like 1 antibody

## Immunogen

[Human DLL1 / Delta-like 1 \(His Tag\) recombinant protein](#)

## Specificity

Human DLL1 / Delta-1

## Antibody description

Rabbit polyclonal to DLL1 / Delta-like 1

## Preparation

Produced in rabbits immunized with purified, recombinant Human DLL1 / Delta-1 (rh DLL1; NP\_005609.3; Met 1-Gly 540). DLL1 specific IgG was purified by human DLL1 affinity chromatography.

## Formulation

0.2 µm filtered solution in PBS with 5% trehalose

## Storage

This antibody can be stored at 2°C-8°C for one month without detectable loss of activity. Antibody products are stable for twelve months from date of receipt when stored at -20°C to -80°C.

Preservative-Free.

Sodium azide is recommended to avoid contamination (final concentration 0.05%-0.1%). It is toxic to cells and should be disposed of

properly. Avoid repeated freeze-thaw cycles.

## Clonality

Polyclonal

## Ig Type

Rabbit IgG

## Applications

ELISA, WB

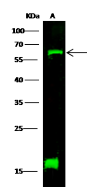
## Dilutions

WB: 10-20 µg/mL

ELISA: 0.1-0.2 µg/mL

This antibody can be used at 0.1-0.2 µg/mL with the appropriate secondary reagents to detect Human DLL1. The detection limit for Human DLL1 is approximately 0.00245 ng/well.

## Validations



Items	Lanes
Sample (Membrane Lysate)	A
Sample	HeLa
Sample Volume (µg/lane)	20
Gel	13% SDS PAGE reducing gel
Recommended Concentration	10-20 µg/ml
Secondary Antibody	DyLight 800 Labeled Antibody to Rabbit IgG (1:1), at 1:5000 dilution.
Developed using Odyssey imaging system.	
Explanation	Predicted band size : 78 kDa Observed band size : 62 kDa Additional bands at : 17 kDa [We are unsure as to the identity of these extra bands. They are possible non-specific bindings].

DLL1 / Delta-1 Antibody, Rabbit PAb, Antigen Affinity Purified, Western blot