

Anti-CREB (2F6) Mouse antibody



Catalog Number: 168372

Product name

Anti-CREB (2F6) Mouse antibody

Specificity

Human, Mouse, Rat, Monkey

Antibody description

CREB (2F6) Mouse monoclonal antibody

Preparation

Antigen: Purified recombinant fragment of human CREB1 expressed in E. Coli.

Formulation

Ascitic fluid containing 0.03% sodium azide.

Storage

Store at 4°C short term. Store at -20°C long term. Avoid freeze / thaw cycle.

Clonality

Monoclonal

Ig Type

Mouse IgG1

Applications

WB, IHC-P, ICC/IF

Dilutions

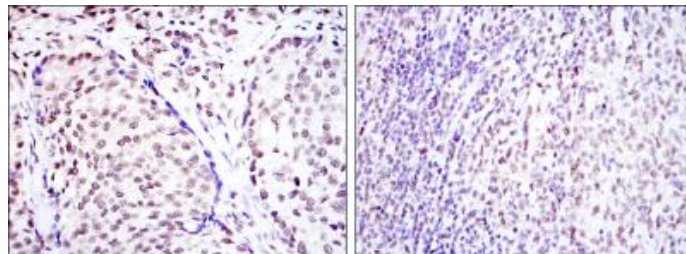
WB: 1/500 - 1/2000

IHC: 1/200 - 1/1000

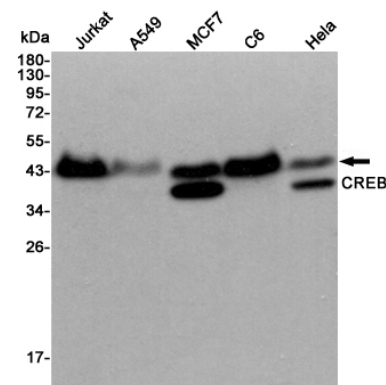
ICC: 1/200 - 1/1000

ELISA: 1/10000

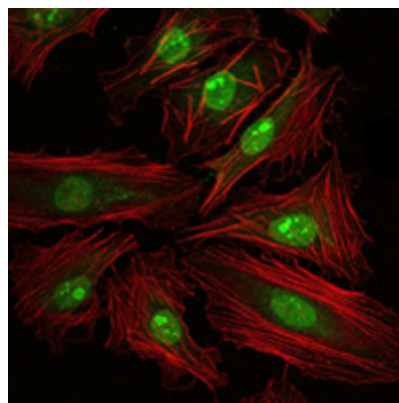
Validations



Immunohistochemical analysis of paraffin-embedded prostate cancer tissues (left) and submaxillary tumor tissues (right) using CREB1 mouse mAb with DAB staining.



Western blot detection of CREB in Jurkat, A549, MCF7, C6 and HeLa cell lysates using CREB mouse mAb (1:3000 diluted). Predicted band size: 43KDa. Observed band size: 43KDa.



Immunofluorescence analysis of HeLa cells using CREB1 mouse mAb (green). Red staining indicates the cytoskeleton.