

# Anti-SF2 Rabbit antibody



Catalog Number: 167372

## Product name

Anti-SF2 Rabbit antibody

## Specificity

Human, Mouse, Rat

## Antibody description

SF2 Rabbit polyclonal antibody

## Preparation

Antigen: A synthetic peptide of human SF2

## Formulation

Supplied in 50nM Tris-Glycine(pH 7.4), 0.15M NaCl, 40%Glycerol, 0.01% sodium azide and 0.05% BSA.

## Storage

Store at -20°C. Stable for 12 months from date of receipt.

## Clonality

Polyclonal

## Ig Type

Rabbit IgG

## Applications

WB, IHC-P, ICC/IF, FC

## Dilutions

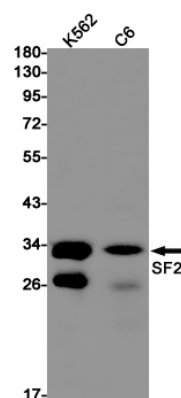
WB: 1/2000

IHC: 1/50

ICC/IF: 1/20-1/100

FC: 1/20

## Validations



Western blot detection of SF2 in K562,C6 cell lysates using SF2 Rabbit pAb(1:1000 diluted).Predicted band size:28kDa.Observed band size:28kDa.