

MAF antibody

Catalog Number: 112372

Product name

MAF antibody

IP: 1:200-1:2000

IHC: 1:20-1:200

Specificity

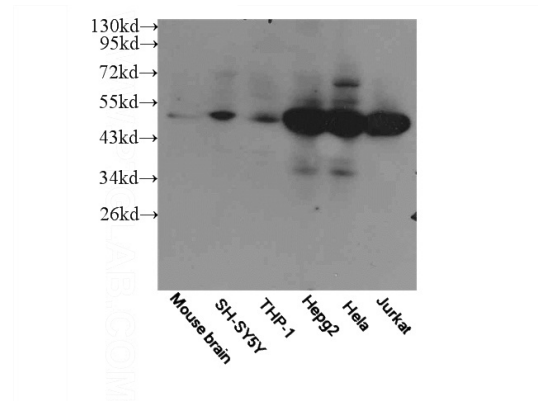
Human, Mouse, Rat; other species not tested.

IF: 1:50-1:500

Antibody description

MAF Rabbit Polyclonal antibody. Positive IP detected in A431 cells. Positive WB detected in A431 cells, A375 cells, K-562 cells. Positive IF detected in A431 cells. Positive IHC detected in human kidney tissue. Observed molecular weight by Western-blot: 48-50 kDa

Validations



Preparation

This antibody was obtained by immunization of Peptide (Accession Number: NM_005360). Purification method: Antigen affinity purified.

Formulation

PBS with 0.02% sodium azide and 50% glycerol pH 7.3.

Storage

Store at -20°C. DO NOT ALIQUOT

Clonality

Polyclonal

Ig Type

Rabbit IgG

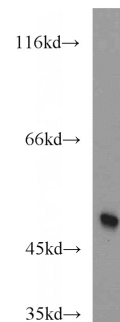
Applications

ELISA, IHC, WB, IP, IF

Dilutions

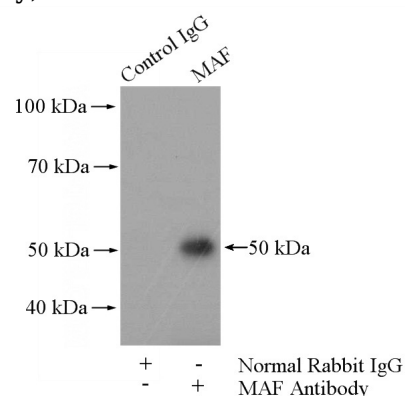
Recommended Dilution:

WB: 1:200-1:2000



WB result of Catalog No:112372.

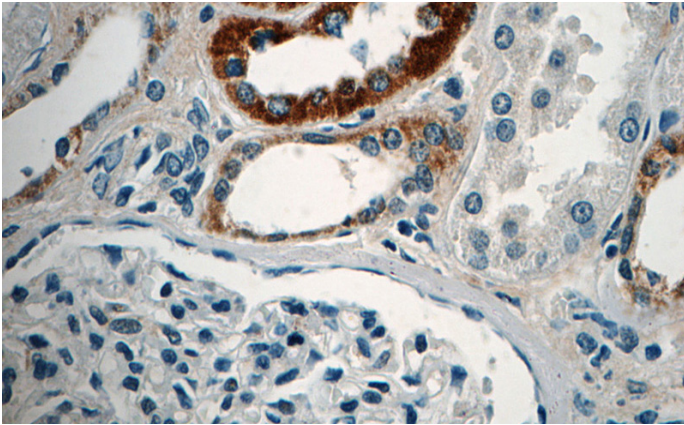
A431 cells were subjected to SDS PAGE followed by western blot with Catalog No:112372(MAF antibody) at dilution of 1:500



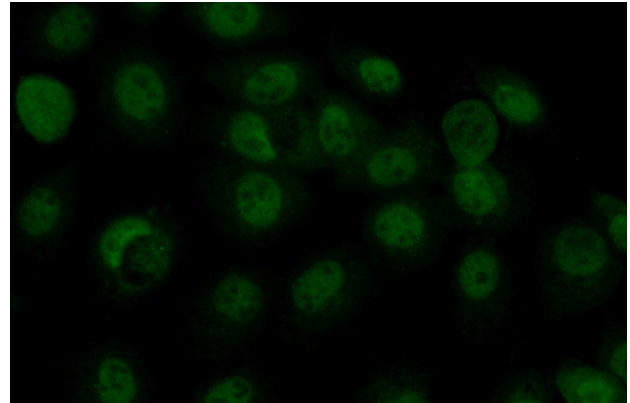
IP Result of anti-MAF (IP:Catalog No:112372, 4ug; Detection:Catalog No:112372 1:500) with A431 cells lysate 2000ug.

MAF antibody

Catalog Number: 112372



Immunohistochemistry of paraffin-embedded human kidney tissue slide using Catalog No:112372(MAF Antibody) at dilution of 1:50 (under 40x lens)



Immunofluorescent analysis of (10% Formaldehyde) fixed A431 cells using Catalog No:112372(MAF Antibody) at dilution of 1:50 and Alexa Fluor 488-conjugated AffiniPure Goat Anti-Rabbit IgG(H+L)