

# Human BVES / POPDC1 (GST Tag) recombinant protein



Catalog Number: 502372

## General Information

### Gene Name Synonym

Popeye domain-containing protein 1

### Protein Construction

A DNA sequence encoding the human BVES (NP\_671488.1) (Met1-Asn36) was fused with the GST tag at the N-terminus.

### Organism

Human

### Expression Host

E. coli

## QC Testing

### Purity

> 90 % as determined by SDS-PAGE

### Endotoxin

Please contact us for more information.

### Stability

Samples are stable for up to twelve months from date of receipt at -70°C

### Predicted N terminal

Met

### Molecular Mass

The recombinant human BVES/GST chimera consists of 267 amino acids and has a predicted

molecular mass of 30.8 kDa. It migrates as an approximately 32.2 KDa band in SDS-PAGE under reducing conditions.

### Formulation

Lyophilized from sterile PBS, pH 7.4.

1. 5 % trehalose and mannitol are added as protectants before lyophilization.

2. Please contact us for any concerns or special requirements.

## Usage Guide

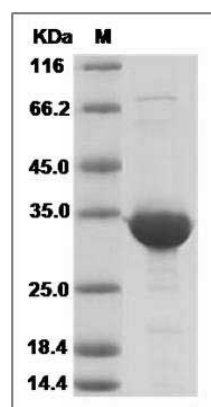
### Storage

Store it under sterile conditions at -20°C to -80°C. It is recommended that the protein be aliquoted for optimal storage. Avoid repeated freeze-thaw cycles.

### Reconstitution

Adding sterile water, prepare a stock solution of 0.25 mg/ml. Concentration is measured by UV-Vis.

### SDS-PAGE



Human BVES / POPDC1 Protein (GST Tag) SDS-PAGE