

Anti-KLRC3 antibody



Catalog Number: 142372

Product name

Anti-KLRC3 antibody

Specificity

Human KLRC3 / NKG2E

Antibody description

Rabbit Polyclonal to Human KLRC3

Preparation

Produced in rabbits immunized with a synthetic peptide corresponding to the N-terminus of the Human KLRC3 / NKG2E, and purified by antigen affinity chromatography.

Formulation

0.2 μ m filtered solution in PBS

Storage

This antibody can be stored at 2°C-8°C for one month without detectable loss of activity. Antibody products are stable for twelve months from date of receipt when stored at -20°C to -80°C.

Preservative-Free.

Sodium azide is recommended to avoid contamination (final concentration 0.05%-0.1%). It is toxic to cells and should be disposed of

properly. Avoid repeated freeze-thaw cycles.

Clonality

Polyclonal

Ig Type

Rabbit IgG

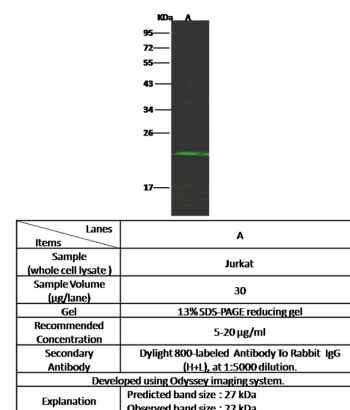
Applications

WB

Dilutions

WB: 5-20 μ g/ml

Validations



KLRC3 / NKG2E Antibody, Rabbit PAb, Antigen Affinity Purified, Western blot