

# Anti-A2M antibody



Catalog Number: 176672

## Product name

Anti-A2M antibody

## Specificity

Human

## Antibody description

Mouse monoclonal antibody to A2M

## Preparation

This antigen of this antibody was recombinant protein within human alpha-2-macroglobulin aa 950-1200.

## Formulation

Liquid, 1\*PBS (pH7.4), 0.2% BSA, 40% Glycerol. Preservative: 0.05% Sodium Azide.

## Storage

Store at +4°C after thawing. Aliquot store at -20°C or -80°C. Avoid repeated freeze / thaw cycles.

## Clonality

Monoclonal

## Ig Type

Mouse IgG1

## Applications

WB, IHC-P, ELISA

## Dilutions

WB: 1:500-1:2,000

IHC-P: 1:100-1:500

## Validations

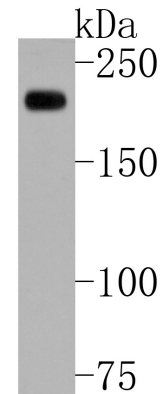


Fig1:; Western blot analysis of Alpha-2-macroglobulin on LO2 cell lysates. Proteins were transferred to a PVDF membrane and blocked with 5% BSA in PBS for 1 hour at room temperature. The primary antibody ( 1/500) was used in 5% BSA at room temperature for 2 hours. Goat Anti-Rabbit IgG - HRP Secondary Antibody (HA1001) at 1:5,000 dilution was used for 1 hour at room temperature.

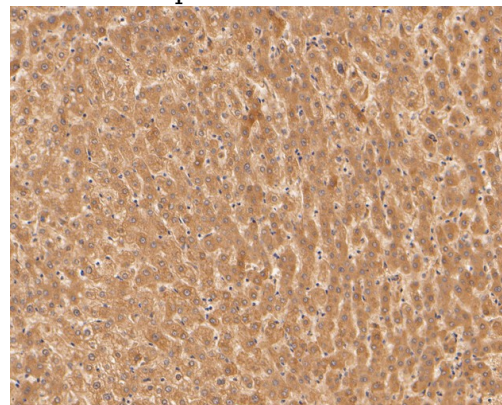


Fig2:; Immunohistochemical analysis of paraffin-embedded human liver tissue using anti-Alpha-2-macroglobulin antibody. The section was pre-treated using heat mediated antigen retrieval with Tris-EDTA buffer (pH 8.0-8.4) for 20 minutes. The tissues were blocked in 5% BSA for 30 minutes at room temperature, washed with ddH<sub>2</sub>O and PBS, and then probed with the primary antibody ( 1/400) for 30 minutes at room temperature. The detection was performed using an HRP conjugated compact polymer system. DAB was used as the chromogen. Tissues were counterstained with hematoxylin and mounted with DPX.