

# Anti-BCRP/ABCG2 antibody



Catalog Number: 106672

## Product name

Anti-BCRP/ABCG2 antibody

## Specificity

Human ABCG2

## Antibody description

Rabbit polyclonal to BCRP/ABCG2

## Preparation

Produced in rabbits immunized with a synthetic peptide corresponding to the center region of the Human ABCG2, and purified by antigen affinity chromatography.

## Formulation

0.2 µm filtered solution in PBS

## Storage

This antibody can be stored at 2°C-8°C for one month without detectable loss of activity. Antibody products are stable for twelve months from date of receipt when stored at -20°C to -80°C.

Preservative-Free.

Sodium azide is recommended to avoid contamination (final concentration 0.05%-0.1%). It is toxic to cells and should be disposed of properly. Avoid repeated freeze-thaw cycles.

## Clonality

Polyclonal

## Ig Type

Rabbit IgG

## Applications

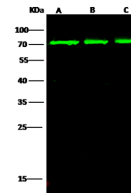
WB, IP

## Dilutions

WB: 5-10 µg/ml

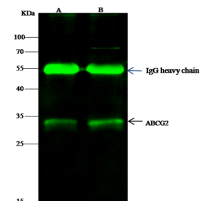
IP: 1-4 µg/mg of lysate

## Validations



Lanes	A	B	C
Items			
Sample (whole cell lysate)	HepG2	Jurkat	cos-7
Sample Volume (µg/lane)	30	30	30
Gel	13% SDS-PAGE reducing gel		
Recommended Concentration	5-10 µg/ml		
Secondary Antibody	Dylight 800 labeled Antibody to Rabbit IgG (H+L), at 1:5000 dilution.		
	Developed using Odyssey imaging system.		
Explanation	Predicted band size : 72 kDa Observed band size : 70 kDa		

## ABCG2 Antibody, Rabbit PAb, Antigen Affinity



Lanes	A	B
Items		
Sample (whole cell lysate)	HepG2	Jurkat
Sample quantity	0.5 mg	
IP antibody quantity	2 µg	
Immunomagnetic beads/Pulldown	60 µg	
Gel	13% SDS-PAGE reducing gel	
Primary antibody	KLJ1-SMCC-SIN0A341 antibody at 10 µg/ml	
Secondary antibody	Dylight 800 labeled antibody to rabbit IgG (H+L), at 1:5000 dilution	

Purified, Western blot

## ABCG2 Antibody, Rabbit PAb, Antigen Affinity

Purified, Immunoprecipitation