

Anti-MMP9 Rabbit antibody

Catalog Number: 166672

Product name

Anti-MMP9 Rabbit antibody

Specificity

Human, Mouse, Rat

Antibody description

MMP9 Rabbit polyclonal antibody

Preparation

Antigen: A synthetic peptide of human MMP9

Formulation

PBS with 0.02% sodium azide, 50% glycerol, pH7.3.

Storage

Store at -20°C . Avoid freeze / thaw cycles.

Clonality

Polyclonal

Ig Type

Rabbit IgG

Applications

WB, ICC/IF

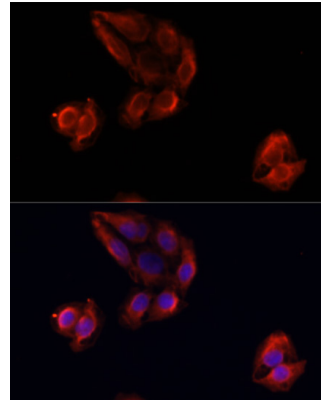
Dilutions

WB: 1/500 - 1/2000

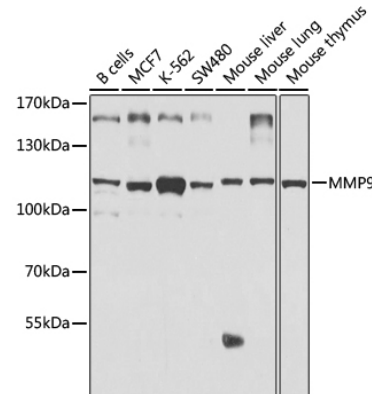
;IHC: 1/100 - 1/200

;IF: 1/50 - 1/200

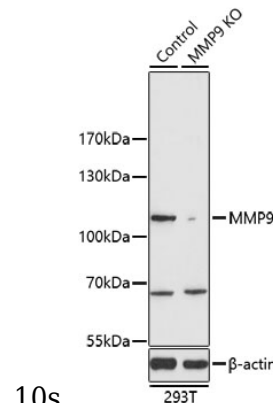
Validations



Immunofluorescence - [KO Validated] MMP9 Polyclonal Antibody. Immunofluorescence analysis of U-2OS cells using MMP9 antibody at dilution of 1:100. Blue: DAPI for nuclear staining.



Western blot - [KO Validated] MMP9 Polyclonal Antibody. Western blot analysis of extracts of various cell lines, using MMP9 antibody at 1:1000 dilution. Secondary antibody: HRP Goat Anti-Rabbit IgG (H+L) at 1:10000 dilution. Lysates/proteins: 25ug per lane. Blocking buffer: 3% nonfat dry milk in TBST. Exposure time:



10s.

Western blot - [KO Validated] MMP9 Polyclonal Antibody. Western blot analysis of extracts from

Anti-MMP9 Rabbit antibody



Catalog Number: 166672

normal (control) and MMP9 knockout (KO) 293T cells, using MMP9 antibody at 1:1000 dilution. Secondary antibody: HRP Goat Anti-Rabbit IgG (H+L) at 1:10000

dilution. Lysates/proteins: 25ug per lane. Blocking buffer: 3% nonfat dry milk in TBST. Exposure time: 90s.