

# RDX antibody



Catalog Number: 114672

## Product name

RDX antibody

## Immunogen

[Human RDX Recombinant protein \(GST tag\)](#)

## Specificity

Human, Mouse; other species not tested.

## Antibody description

RDX Rabbit Polyclonal antibody. Positive WB detected in mouse liver tissue, HeLa cells, Jurkat cells. Observed molecular weight by Western-blot: 70-75 kDa

## Preparation

This antibody was obtained by immunization of RDX recombinant protein (Accession Number: XM\_047427390). Purification method: Antigen affinity purified.

## Formulation

PBS with 0.1% sodium azide and 50% glycerol pH 7.3.

## Storage

Store at -20°C. DO NOT ALIQUOT

## Clonality

Polyclonal

## Ig Type

Rabbit IgG

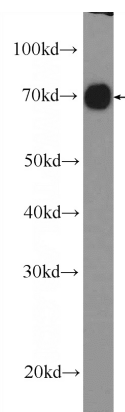
## Applications

ELISA, WB

## Dilutions

Recommended Dilution:  
WB: 1:500-1:5000

## Validations



mouse liver tissue were subjected to SDS PAGE followed by western blot with Catalog No:114672(RDX Antibody) at dilution of 1:1000