

PD-ECGF antibody



Catalog Number: 113672

Product name

PD-ECGF antibody

Specificity

Human; other species not tested.

Antibody description

PD-ECGF Rabbit Polyclonal antibody. Positive IHC detected in human ovary tumor tissue, human breast cancer tissue, human stomach cancer tissue. Positive WB detected in human placenta tissue, A431 cells, HeLa cells, MCF7 cells.

Observed molecular weight by Western-blot: 50kd

Preparation

This antibody was obtained by immunization of PD-ECGF recombinant protein (Accession Number: NM_001113755). Purification method: Antigen affinity purified.

Formulation

PBS with 0.02% sodium azide and 50% glycerol pH 7.3.

Storage

Store at -20°C. DO NOT ALIQUOT

Clonality

Polyclonal

Ig Type

Rabbit IgG

Applications

ELISA, WB, IHC

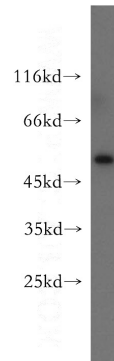
Dilutions

Recommended Dilution:

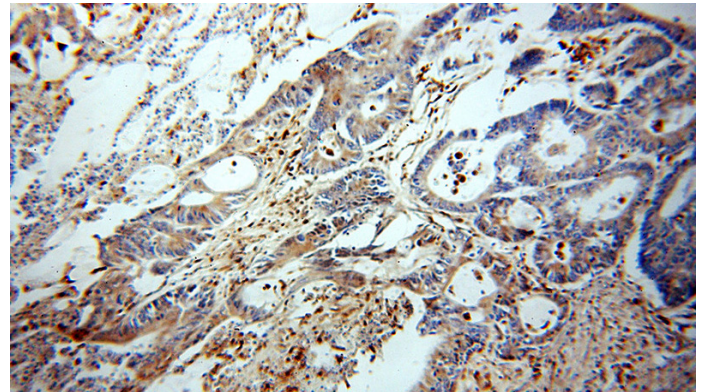
WB: 1:200-1:2000

IHC: 1:20-1:200

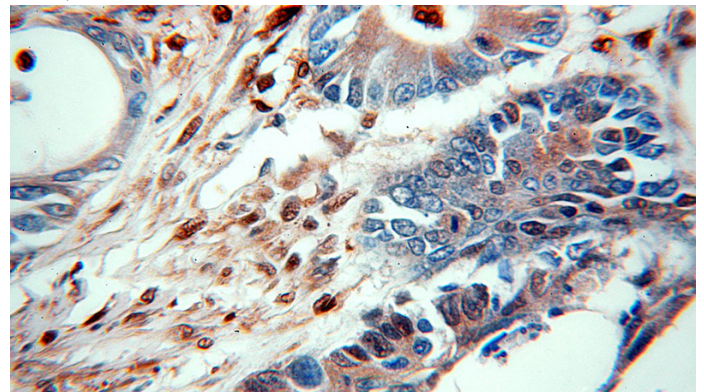
Validations



human placenta tissue were subjected to SDS PAGE followed by western blot with Catalog No:113672(PD-ECGF antibody) at dilution of 1:300



Immunohistochemical of paraffin-embedded human ovary tumor using Catalog No:113672(PD-ECGF antibody) at dilution of 1:50 (under 10x lens)



Immunohistochemical of paraffin-embedded human ovary tumor using Catalog No:113672(PD-

PD-ECGF antibody



Catalog Number: 113672

ECGF antibody) at dilution of 1:50 (under 40x lens)