

CHPF C-terminal antibody



Catalog Number: 109272

Product name

CHPF C-terminal antibody

Specificity

Human, Mouse, Rat; other species not tested.

Antibody description

CHPF C-terminal Rabbit Polyclonal antibody. Positive IHC detected in human colon cancer tissue. Positive WB detected in COLO 320 cells, HEK-293 cells, human skeletal muscle tissue. Observed molecular weight by Western-blot: 86 kDa

Preparation

This antibody was obtained by immunization of CHPF C-terminal recombinant protein (Accession Number: NM_024536). Purification method: Antigen affinity purified.

Formulation

PBS with 0.1% sodium azide and 50% glycerol pH 7.3.

Storage

Store at -20°C. DO NOT ALIQUOT

Clonality

Polyclonal

Ig Type

Rabbit IgG

Applications

ELISA, IHC, WB

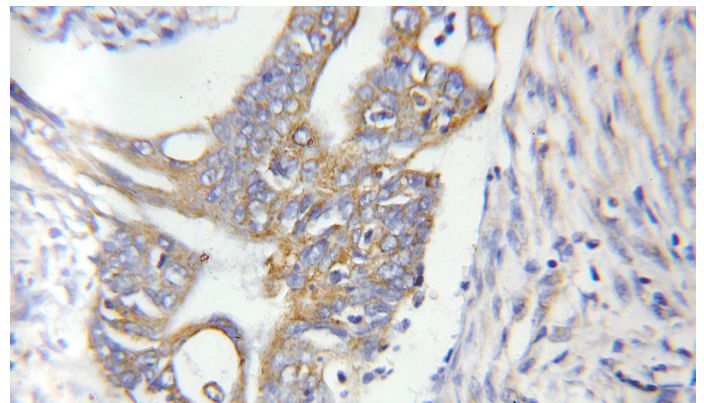
Dilutions

Recommended Dilution:

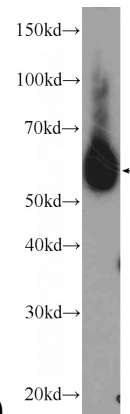
WB: 1:500-1:5000

IHC: 1:20-1:200

Validations



Immunohistochemical of paraffin-embedded human colon cancer using Catalog No:109272(CHPF antibody) at dilution of 1:50



(under 10x lens)

COLO 320 cells were subjected to SDS PAGE followed by western blot with Catalog No:109272(CHPF Antibody) at dilution of 1:1000