

# SHF antibody

Catalog Number: 115272

## Product name

SHF antibody

## Specificity

Human, Mouse, Rat; other species not tested.

## Antibody description

SHF Rabbit Polyclonal antibody. Positive WB detected in mouse skeletal muscle tissue. Positive IHC detected in human skeletal muscle tissue, human liver tissue. Observed molecular weight by Western-blot: 46-50kd

## Preparation

This antibody was obtained by immunization of SHF recombinant protein (Accession Number: BC101601). Purification method: Antigen affinity purified.

## Formulation

PBS with 0.02% sodium azide and 50% glycerol pH 7.3.

## Storage

Store at -20°C. DO NOT ALIQUOT

## Clonality

Polyclonal

## Ig Type

Rabbit IgG

## Applications

ELISA, WB, IHC

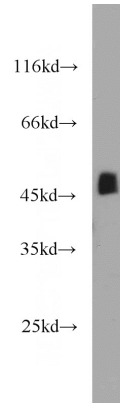
## Dilutions

Recommended Dilution:

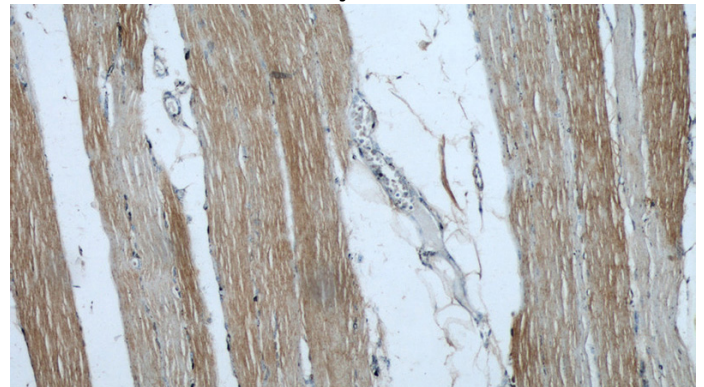
WB: 1:500-1:5000

IHC: 1:20-1:200

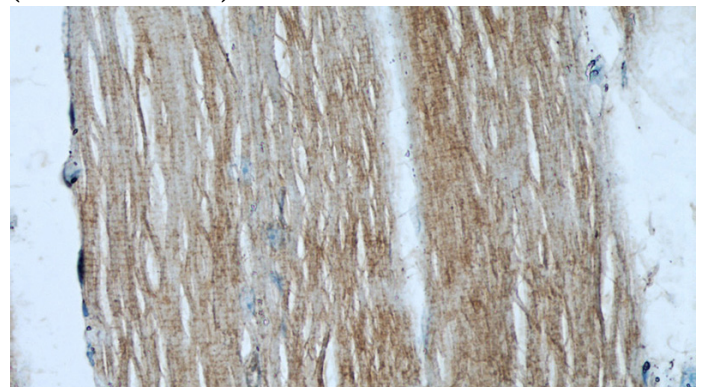
## Validations



mouse skeletal muscle tissue were subjected to SDS PAGE followed by western blot with Catalog No:115272(SHF antibody) at dilution of 1:1000



Immunohistochemical of paraffin-embedded human skeletal muscle using Catalog No:115272(SHF antibody) at dilution of 1:50 (under 10x lens)



Immunohistochemical of paraffin-embedded human skeletal muscle using Catalog No:115272(SHF antibody) at dilution of 1:50

# SHF antibody



Catalog Number: 115272

---

(under 40x lens)