

Anti-C5AR1 antibody



Catalog Number: 175272

Product name

Anti-C5AR1 antibody

Clonality

Polyclonal

Specificity

Human, Rat, Dog, Pig, Cow, Rabbit, Sheep, Guinea Pig

Ig Type

Rabbit IgG

Antibody description

Rabbit polyclonal antibody to C5AR1

Applications

WB

Preparation

This antigen of this antibody was klh conjugated synthetic peptide derived from human c5r1 51-150/350

Dilutions

WB:1:500-2000

Formulation

Liquid, 0.01M TBS(pH7.4) with 1% BSA, 0.03% Proclin300 and 50% Glycerol.

Validations

Storage

Store at -20°C for one year. Avoid repeated freeze/thaw cycles. The lyophilized antibody is stable at room temperature for at least one month and for greater than a year when kept at -20°C. When reconstituted in sterile pH 7.4 0.01M PBS or diluent of antibody the antibody is stable for at least two weeks at 2-4°C.

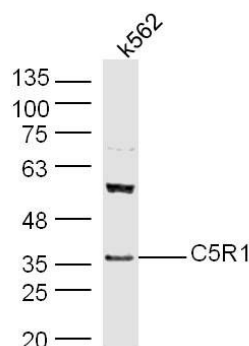


Fig1: Protein: k562(human) lysate at 40ug;; Primary: rabbit Anti-C5R1 at 1:300;; Secondary: HRP conjugated Goat-Anti-rabbit IgG(bs-0295G-HRP) at 1: 5000;; Predicted band size: 39 kD; Observed band size: 36 kD