

General Information

Gene Name Synonym

Islet of Langerhans regenerating protein 2;
Pancreatic stone protein 2; Pancreatic thread
protein 2

Protein Construction

A DNA sequence encoding the mouse REG2
(NP_033069.1) (Met1-Ala173) was expressed with
the Fc region of human IgG1 at the C-terminus.

Organism

Mouse

Expression Host

Human Cells

QC Testing

Purity

> 95 % as determined by SDS-PAGE

Endotoxin

< 1.0 EU per μg of the protein as determined by
the LAL method

Stability

Samples are stable for up to twelve months from
date of receipt at -70°C

Predicted N terminal

Gln 23

Molecular Mass

The recombinant mouse REG2 comprises 389
amino acids and has a predicted molecular mass
of 43.6 kDa. The apparent molecular mass of the
protein is approximately 45.4 kDa in SDS-PAGE
under reducing conditions.

Formulation

Lyophilized from sterile PBS, pH 7.4.

1. 5 % trehalose and mannitol are added as
protectants before lyophilization.

2. Please contact us for any concerns or special
requirements.

Usage Guide

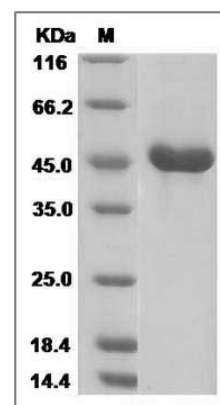
Storage

Store it under sterile conditions at -20°C to -80°C .
It is recommended that the protein be aliquoted
for optimal storage. Avoid repeated freeze-thaw
cycles.

Reconstitution

Adding sterile water, prepare a stock solution of
0.25 mg/ml. Concentration is measured by UV-Vis.

SDS-PAGE



Mouse REG2 / REG-2 Protein (Fc Tag) SDS-PAGE