

# Anti-SECTM1 antibody



Catalog Number: 103272

## Product name

Anti-SECTM1 antibody

## Immunogen

[Human SECTM1 \(His Tag\) recombinant protein](#)

## Specificity

Human SECTM1

## Antibody description

Rabbit polyclonal to SECTM1

## Preparation

Produced in rabbits immunized with purified, recombinant Human SECTM1 (rh SECTM1; NP\_001618.2; Met 1-Ala 526). SECTM1 specific IgG was purified by Human SECTM1 affinity chromatography.

## Formulation

PBS, pH7.4, 5% Trehalose

## Storage

This antibody can be stored at 2°C-8°C for one month without detectable loss of activity. Antibody products are stable for twelve months from date of receipt when stored at -20°C to -80°C.

Preservative-Free.

Sodium azide is recommended to avoid contamination (final concentration 0.05%-0.1%). It is toxic to cells and should be disposed of properly. Avoid repeated freeze-thaw cycles.

## Clonality

Polyclonal

## Ig Type

Rabbit IgG

## Applications

ELISA, WB, IP

## Dilutions

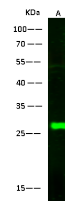
WB: 2-10 µg/ml

ELISA: 0.1-0.2 µg/mL

This antibody can be used at 0.1-0.2 µg/mL with the appropriate secondary reagents to detect Human SECTM1.

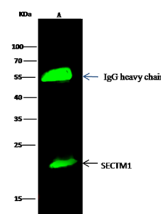
IP: 1-4 µg/mg of lysate

## Validations



Lanes	A
Items	
Sample (whole cell lysate)	293T
Sample Volume (µg/lane)	30
Gel	13% SDS-PAGE reducing gel
Recommended Concentration	2-10 µg/ml
Secondary Antibody	Dylight 800-labeled Antibody To Rabbit IgG (H+L), at 1:5000 dilution. Developed using Odyssey imaging system.
Explanation	Predicted band size : 27 kDa Observed band size : 27 kDa

## SECTM1 Antibody, Rabbit PAb, Antigen Affinity Purified, Western blot



Lanes	A
Items	
Sample (whole cell lysate)	293T
Sample quantity	0.5 mg
IP antibody quantity	2 µg
Protein G agarose	15 µl of 50% Protein G Agarose
Gel	13% SDS-PAGE reducing gel
Primary antibody	SECTM1 antibody at 5 µg/ml [Cat# 12269-8902]
Secondary antibody	Dylight 800-labeled antibody to rabbit IgG (H+L), at 1:5000 dilution

## SECTM1 Antibody, Rabbit PAb, Antigen Affinity Purified