

# CCDC28B antibody



Catalog Number: 108972

## Product name

CCDC28B antibody

## Specificity

Human, Mouse, Rat; other species not tested.

## Antibody description

CCDC28B Rabbit Polyclonal antibody. Positive WB detected in human skeletal muscle tissue, human brain tissue. Observed molecular weight by Western-blot: 30-35 kDa

## Preparation

This antibody was obtained by immunization of CCDC28B recombinant protein (Accession Number: XM\_047430217). Purification method: Antigen affinity purified.

## Formulation

PBS with 0.1% sodium azide and 50% glycerol pH 7.3.

## Storage

Store at -20°C. DO NOT ALIQUOT

## Clonality

Polyclonal

## Ig Type

Rabbit IgG

## Applications

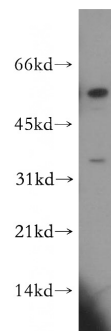
ELISA, WB

## Dilutions

Recommended Dilution:

WB: 1:500-1:5000

## Validations



human skeletal muscle tissue were subjected to SDS PAGE followed by western blot with Catalog No:108972(CCDC28B antibody) at dilution of 1:300