

Anti-PACT (phospho KR activating protein)/PRKRA Rabbit antibody



Catalog Number: 168972

Product name

Anti-PACT (phospho KR activating protein)/PRKRA Rabbit antibody

Ig Type

Rabbit IgG

Specificity

Human, Mouse, Rat

Applications

WB

Antibody description

PACT (phospho KR activating protein)/PRKRA Rabbit monoclonal antibody

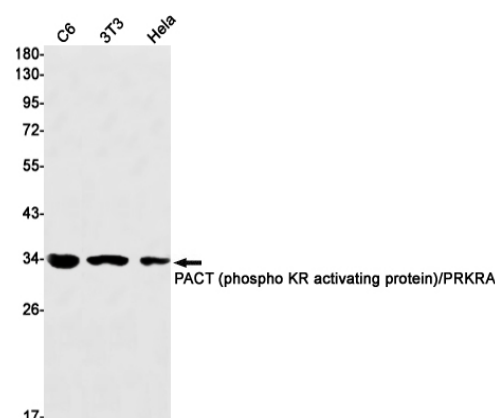
Dilutions

WB: 1/1000

Preparation

Antigen: A synthetic peptide of of human PACT (phospho KR activating protein)/PRKRA

Validations



Formulation

Supplied in 50nM Tris-Glycine(pH 7.4), 0.15M NaCl, 40%Glycerol, 0.01% sodium azide and 0.05% BSA.

Storage

Store at 4°C short term. Aliquot and store at -20°C long term. Avoid freeze / thaw cycle.

Western blot detection of PACT (phospho KR activating protein)/PRKRA in C6,3T3,HeLa cell lysates using PACT (phospho KR activating protein)/PRKRA Rabbit mAb(1:1000 diluted).Predicted band size:34kDa.Observed band size:34kDa.

Clonality

Monoclonal