

WSB2 antibody

Catalog Number: 116972

Product name

WSB2 antibody

Recommended Dilution:

WB: 1:500-1:5000

Specificity

Human, Mouse, Rat; other species not tested.

IP: 1:200-1:2000

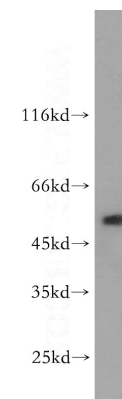
IHC: 1:20-1:200

Antibody description

WSB2 Rabbit Polyclonal antibody. Positive IP detected in mouse kidney tissue. Positive WB detected in mouse kidney tissue, human brain tissue, human kidney tissue, mouse uterus tissue. Positive IHC detected in human prostate cancer tissue. Positive IF detected in HepG2 cells. Observed molecular weight by Western-blot: 50 kDa

IF: 1:10-1:100

Validations



Preparation

This antibody was obtained by immunization of WSB2 recombinant protein (Accession Number: NM_018639). Purification method: Antigen affinity purified.

mouse kidney tissue were subjected to SDS PAGE followed by western blot with Catalog No:116972(WSB2 antibody) at dilution of 1:1000

Formulation

PBS with 0.1% sodium azide and 50% glycerol pH 7.3.

Storage

Store at -20°C. DO NOT ALIQUOT

Clonality

Polyclonal

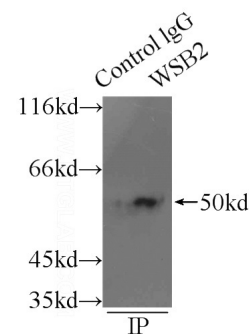
Ig Type

Rabbit IgG

Applications

ELISA, WB, IHC, IF, IP

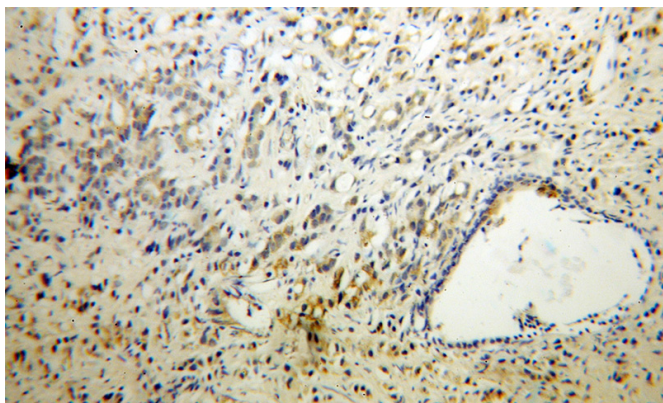
Dilutions



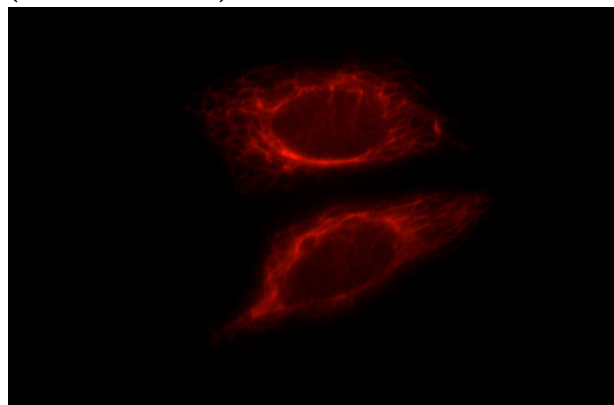
IP Result of anti-WSB2 (IP:Catalog No:116972, 3ug; Detection:Catalog No:116972 1:800) with mouse kidney tissue lysate 6000ug.

WSB2 antibody

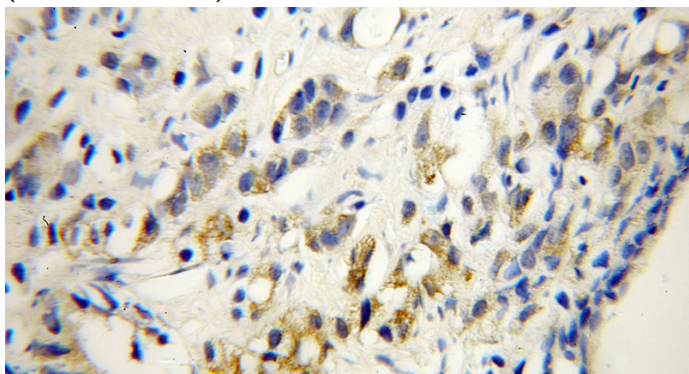
Catalog Number: 116972



Immunohistochemical of paraffin-embedded human prostate cancer using Catalog No:116972(WSB2 antibody) at dilution of 1:50 (under 40x lens)



Immunohistochemical of paraffin-embedded human prostate cancer using Catalog No:116972(WSB2 antibody) at dilution of 1:50 (under 10x lens)



Immunofluorescent analysis of HepG2 cells, using WSB2 antibody Catalog No:116972 at 1:25 dilution and Rhodamine-labeled goat anti-rabbit IgG (red).