

RCAS1 antibody



Catalog Number: 114572

Product name

RCAS1 antibody

WB: 1:200-1:2000

IP: 1:200-1:2000

Specificity

Human, Mouse, Rat; other species not tested.

IHC: 1:20-1:200

IF: 1:10-1:100

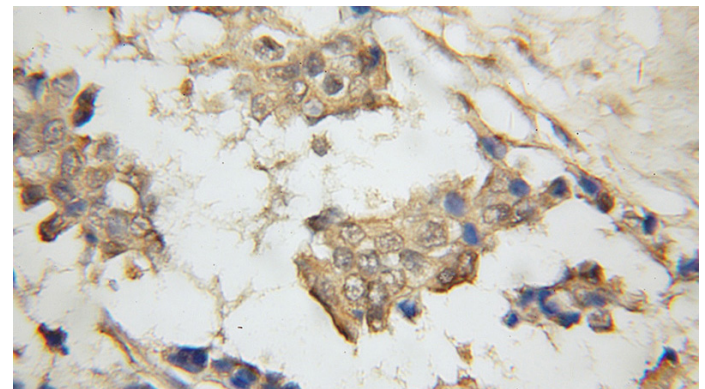
Antibody description

RCAS1 Rabbit Polyclonal antibody. Positive WB detected in mouse heart tissue, HEK-293 cells, HeLa cells, human heart tissue. Positive IP detected in mouse heart tissue. Positive IF detected in HeLa cells. Positive IHC detected in human breast cancer tissue. Observed molecular weight by Western-blot: 32 kDa

Validations

Preparation

This antibody was obtained by immunization of RCAS1 recombinant protein (Accession Number: XM_047422412). Purification method: Antigen affinity purified.



Immunohistochemical of paraffin-embedded human breast cancer using Catalog No:114572(EBAG9 antibody) at dilution of 1:50

Formulation

PBS with 0.1% sodium azide and 50% glycerol pH 7.3.

Storage

Store at -20°C. DO NOT ALIQUOT

Clonality

Polyclonal

Ig Type

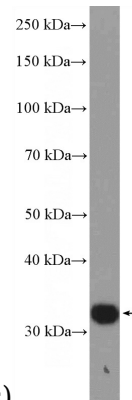
Rabbit IgG

Applications

ELISA, IHC, IP, IF, WB

Dilutions

Recommended Dilution:

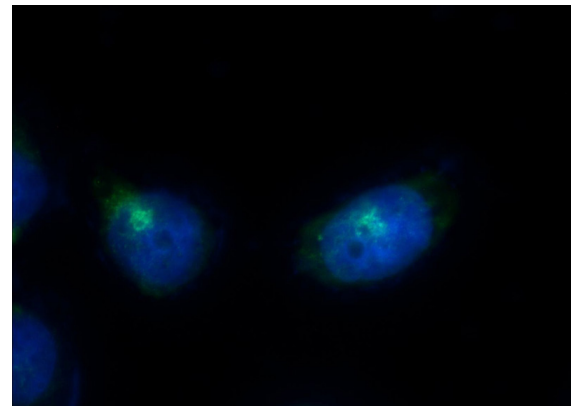
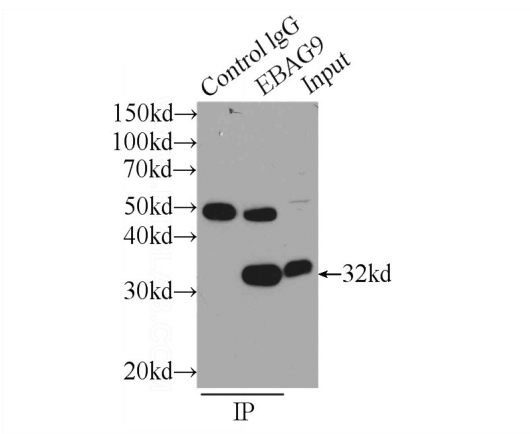


(under 10x lens)

mouse heart tissue were subjected to SDS PAGE followed by western blot with Catalog No:114572(EBAG9 Antibody) at dilution of 1:600

RCAS1 antibody

Catalog Number: 114572



IP Result of anti-EBAG9 (IP:Catalog No:114572, 3ug; Detection:Catalog No:114572 1:800) with mouse heart tissue lysate 1000ug.

Immunofluorescent analysis of HeLa cells using Catalog No:114572(EBAG9 Antibody) at dilution of 1:25 and Alexa Fluor 488-conjugated AffiniPure Goat Anti-Rabbit IgG(H+L)