

Anti-Bim Rabbit antibody



Catalog Number: 167172

Product name

Anti-Bim Rabbit antibody

IP: 1/40

FC: 1/50

Specificity

Human, Mouse, Rat

Antibody description

Bim Rabbit polyclonal antibody

Preparation

Antigen: A synthesized peptide derived from human Bim

Formulation

Rabbit IgG in phosphate buffered saline , pH 7.4, 150mM NaCl, 0.02% sodium azide and 50% glycerol.

Storage

Store at 4°C short term. Store at -20°C long term. Avoid freeze / thaw cycle.

Clonality

Polyclonal

Ig Type

Rabbit IgG

Applications

WB, IHC-P, ICC/IF, IP, FC

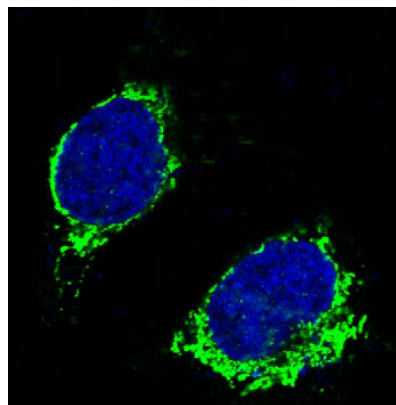
Dilutions

WB: 1/500-1/1000

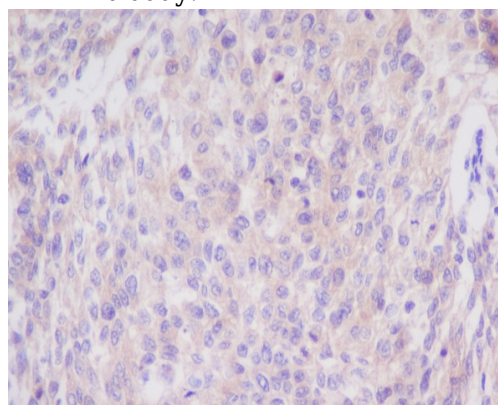
IHC: 1/50-1/100

ICC/IF: 1/50-1/100

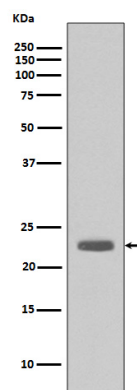
Validations



Immunofluorescent analysis of Raji cells, using Bim Antibody.



Immunohistochemical analysis of paraffin-embedded human cervix cancer, using Bim



Antibody.

Western blot analysis of Bim expression in A431 cell lysate.