

# Human REG4 (His Tag) recombinant protein



Catalog Number: 504172

## General Information

### Gene Name Synonym

Gastrointestinal secretory protein; REG-like protein; Regenerating islet-derived protein IV

### Protein Construction

A DNA sequence encoding the human REG4 (NP\_001152824.1) (Met 1-Pro 158) was expressed, with a polyhistidine tag at the C-terminus.

### Organism

Human

### Expression Host

Human Cells

## QC Testing

### Activity

Measured by the ability of the immobilized protein to support the proliferation of HCT-116 human colorectal carcinoma cells (ATCC: CCL-247) under low serum conditions.

The ED<sub>50</sub> for this effect is typically 4-20 µg/ml.

### Purity

> 95 % as determined by SDS-PAGE

### Endotoxin

< 1.0 EU per µg of the protein as determined by the LAL method

### Stability

Samples are stable for up to twelve months from date of receipt at -70°C

### Predicted N terminal

Ala 26

### Molecular Mass

The recombinant human REG4 consists of 147 amino acids and predicts a molecular mass of 17.4 kDa. In SDS-PAGE under reducing conditions, the apparent molecular mass of rh REG4 is approximately 18 and 22 kDa due to different glycosylation.

### Formulation

Lyophilized from sterile PBS, pH 7.4

1. 5 % trehalose and mannitol are added as protectants before lyophilization.

2. Please contact us for any concerns or special requirements.

## Usage Guide

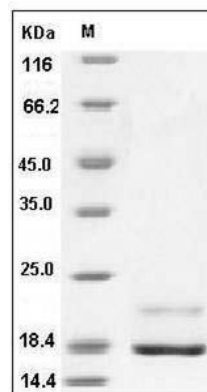
### Storage

Store it under sterile conditions at -20°C to -80°C. It is recommended that the protein be aliquoted for optimal storage. Avoid repeated freeze-thaw cycles.

### Reconstitution

Adding sterile water, prepare a stock solution of 0.25 mg/ml. Concentration is measured by UV-Vis.

### SDS-PAGE



Human REG4 / RELP / GISP Protein (His Tag)  
SDS-PAGE