

# Anti-Nodal Rabbit antibody



Catalog Number: 168872

## Product name

Anti-Nodal Rabbit antibody

## Specificity

Human, Rat

## Antibody description

Nodal Rabbit monoclonal antibody

## Preparation

Antigen: A synthetic peptide of human Nodal

## Formulation

Supplied in 50nM Tris-Glycine(pH 7.4), 0.15M NaCl, 40%Glycerol, 0.01% sodium azide and 0.05% BSA.

## Storage

Store at 4°C short term. Aliquot and store at -20°C long term. Avoid freeze / thaw cycle.

## Clonality

Monoclonal

## Ig Type

Rabbit IgG

## Applications

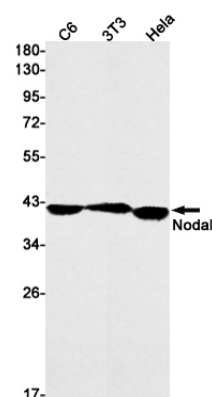
WB, FC

## Dilutions

1:1000-1:5000

1:20-1:100

## Validations



Western blot detection of Nodal in C6,3T3,Hela cell lysates using Nodal Rabbit mAb(1:1000 diluted).Predicted band size:40kDa.Observed band size:40kDa.