

Anti-PIAS1/PIAS2 Rabbit antibody



Catalog Number: 167872

Product name

Anti-PIAS1/PIAS2 Rabbit antibody

Specificity

Human, Mouse, Rat

Antibody description

PIAS1/PIAS2 Rabbit monoclonal antibody

Preparation

Antigen: A synthesized peptide derived from human PIAS1

Formulation

Rabbit IgG in phosphate buffered saline , pH 7.4, 150mM NaCl, 0.02% sodium azide and 50% glycerol.

Storage

Store at 4°C short term. Store at -20°C long term. Avoid freeze / thaw cycle.

Clonality

Monoclonal

Ig Type

Rabbit IgG

Applications

WB, IHC-P, ICC/IF, IP, FC

Dilutions

WB: 1/500-1/2000

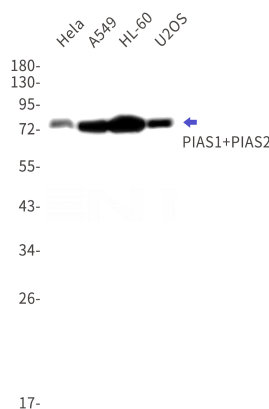
IHC: 1/50-1/200

ICC/IF: 1/50-1/200

IP: 1/50

FC:1/50

Validations



Western blot detection of PIAS1+PIAS2 in HeLa,A549,HL-60,U2OS cell lysates using PIAS1+PIAS2 Rabbit mAb(1:1000 diluted).Observed band size:76kDa.