

Anti-eIF1A Rabbit antibody



Catalog Number: 166872

Product name

Anti-eIF1A Rabbit antibody

Specificity

Human, Mouse, Rat

Antibody description

eIF1A Rabbit polyclonal antibody

Preparation

Antigen: A synthetic peptide of human eIF1A

Formulation

Supplied in 50nM Tris-Glycine(pH 7.4), 0.15M NaCl, 40%Glycerol, 0.01% sodium azide and 0.05% BSA.

Storage

Store at -20°C. Stable for 12 months from date of receipt.

Clonality

Polyclonal

Ig Type

Rabbit IgG

Applications

WB, ICC/IF, IP

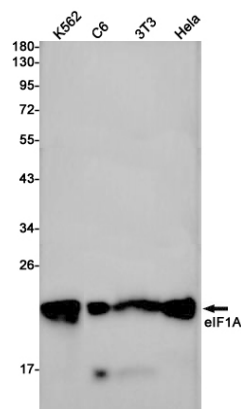
Dilutions

WB: 1/2000-1/10000

ICC/IF: 1/20

IP: 1/20

Validations



Western blot detection of eIF1A in K562, C6, 3T3, HeLa cell lysates using eIF1A Rabbit pAb(1:1000 diluted). Predicted band size: 17kDa. Observed band size: 17kDa.