

Human HER2/ErbB2 (Fc Tag) recombinant protein



Catalog Number: 503872

General Information

Gene Name Synonym

Metastatic lymph node gene 19 protein; Proto-oncogene Neu; Proto-oncogene c-ErbB-2; Tyrosine kinase-type cell surface receptor HER2; p185erbB2

Protein Construction

A DNA sequence encoding the extracellular domain (Met 1-Thr 652) of human ErbB2 (NP_004439.2) was fused with the Fc region of human IgG1 at the C-terminus.

Organism

Human

Expression Host

Human Cells

QC Testing

Activity

Measured by its binding ability in a functional ELISA.

Immobilized human ErbB2 at 2.5 µg/ml can bind Herceptin with a linear range of 3.2-80 ng/ml.

Purity

> 90 % as determined by SDS-PAGE

Endotoxin

< 1.0 EU per µg of the protein as determined by the LAL method

Stability

Samples are stable for up to twelve months from date of receipt at -70°C

Predicted N terminal

Thr 23

Molecular Mass

The recombinant human ErbB2/Fc chimera is a disulfide-linked homodimeric protein generated by proteolytic removal of the signal peptide. The monomer comprises 868 amino acids and has a calculated molecular mass of 96.1 kDa. As a result of glycosylation, the monomer migrates as an approximately 130-140 kDa protein in SDS-PAGE under reducing conditions.

Formulation

Lyophilized from sterile PBS, pH 7.4

1. 5 % trehalose and mannitol are added as protectants before lyophilization.

2. Please contact us for any concerns or special requirements.

Usage Guide

Storage

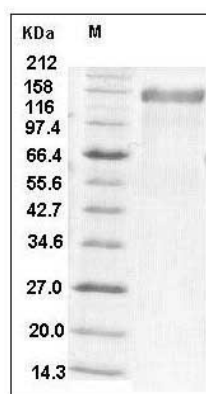
Store it under sterile conditions at -20°C to -80°C.

It is recommended that the protein be aliquoted for optimal storage. Avoid repeated freeze-thaw cycles.

Reconstitution

Adding sterile water, prepare a stock solution of 0.25 mg/ml. Concentration is measured by UV-Vis.

SDS-PAGE



Human HER2/ErbB2 (Fc Tag) recombinant protein



Catalog Number: 503872

Human HER2 / ErbB2 Protein (Fc Tag) SDS-PAGE