

EEF1G Polyclonal Antibody



Catalog Number: 163872

Product name

EEF1G Polyclonal Antibody

Specificity

Human, Mouse, Rat

Antibody description

Polyclonal antibody to EEF1G

Preparation

Antigen: Recombinant protein of human EEF1G

Formulation

PBS with 0.02% sodium azide, 50% glycerol, pH7.3.

Storage

Store at -20°C. Avoid freeze / thaw cycles.

Clonality

Polyclonal

Ig Type

Rabbit IgG

Applications

WB, IHC, IF

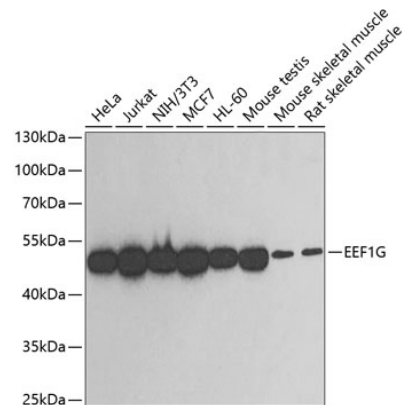
Dilutions

WB 1:500 - 1:2000

IHC 1:100 - 1:200

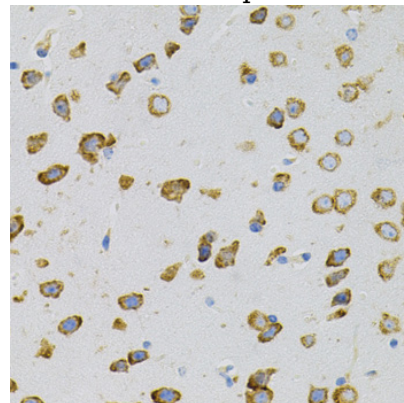
IF 1:50 - 1:200

Validations



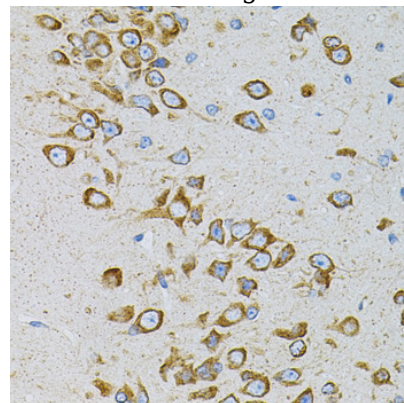
Western blot - EEF1G Polyclonal Antibody

Western blot analysis of extracts of various cell lines, using EEF1G antibody at 1:500 dilution. Secondary antibody: HRP Goat Anti-Rabbit IgG (H+L) at 1:10000 dilution. Lysates/proteins: 25ug per lane. Blocking buffer: 3% nonfat dry milk in TBST. Detection: ECL Enhanced Kit. Exposure time: 30s.



Immunohistochemistry - EEF1G Polyclonal Antibody

Immunohistochemistry of paraffin-embedded mouse brain using EEF1G antibody (40x lens).



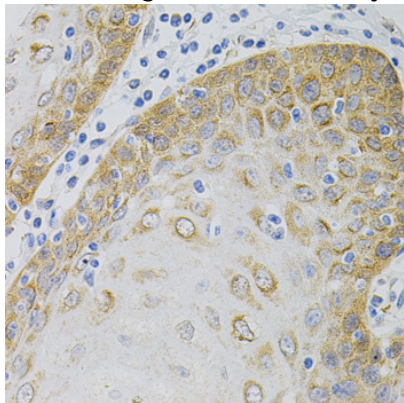
EEF1G Polyclonal Antibody



Catalog Number: 163872

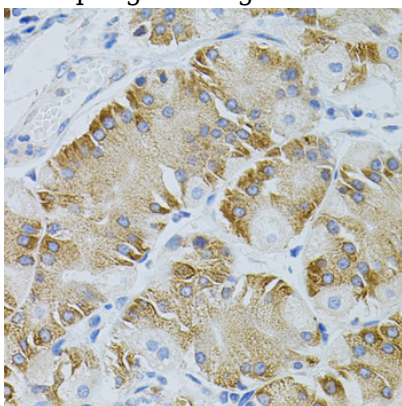
Immunohistochemistry - EEF1G Polyclonal Antibody

Immunohistochemistry of paraffin-embedded rat brain using EEF1G antibody (40x lens).



Immunohistochemistry - EEF1G Polyclonal Antibody

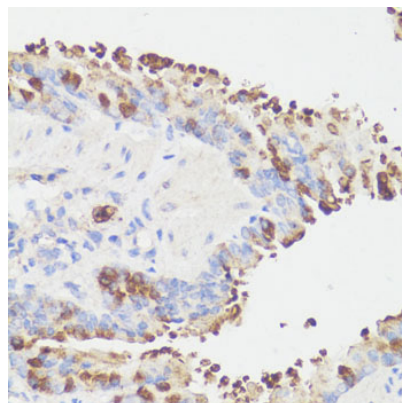
Immunohistochemistry of paraffin-embedded human esophagus using EEF1G antibody (40x lens).



lens).

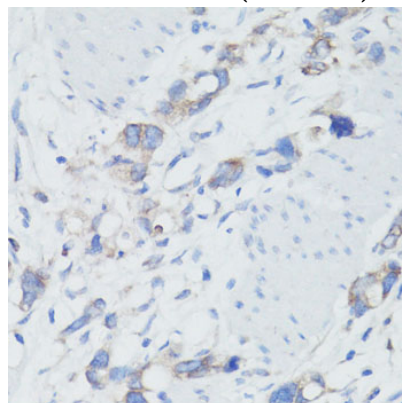
Immunohistochemistry - EEF1G Polyclonal Antibody

Immunohistochemistry of paraffin-embedded human stomach using EEF1G antibody (40x lens).



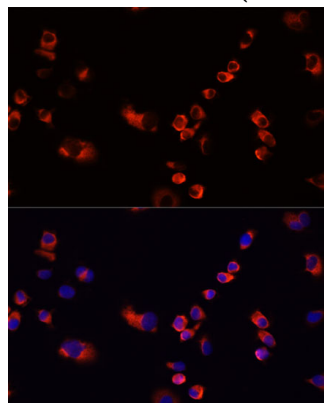
Immunohistochemistry - EEF1G Polyclonal Antibody

Immunohistochemistry of paraffin-embedded human liver cancer using EEF1G antibody at dilution of 1:100 (40x lens).



Immunohistochemistry - EEF1G Polyclonal Antibody

Immunohistochemistry of paraffin-embedded human gastric cancer using EEF1G antibody at dilution of 1:100 (40x lens).



Immunofluorescence - EEF1G Polyclonal Antibody

EEF1G Polyclonal Antibody



Catalog Number: 163872

Immunofluorescence analysis of A431 cells using

EEF1G antibody at dilution of 1:100. Blue: DAPI for nuclear staining.