

CCP1 antibody

Catalog Number: 109072

Product name

CCP1 antibody

WB: 1:200-1:2000

IP: 1:500-1:5000

Specificity

Human, Mouse, Rat; other species not tested.

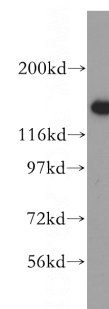
IHC: 1:20-1:200

IF: 1:10-1:100

Antibody description

CCP1 Rabbit Polyclonal antibody. Positive IHC detected in human testis tissue, human heart tissue. Positive IF detected in A549 cells. Positive WB detected in A549 cells, mouse testis tissue. Positive IP detected in mouse testis tissue. Observed molecular weight by Western-blot: 138 kDa

Validations



Preparation

This antibody was obtained by immunization of CCP1 recombinant protein (Accession Number: XM_047423096). Purification method: Antigen affinity purified.

A549 cells were subjected to SDS PAGE followed by western blot with Catalog No:109072(CCP1 antibody) at dilution of 1:500

Formulation

PBS with 0.02% sodium azide and 50% glycerol pH 7.3.

Storage

Store at -20°C. DO NOT ALIQUOT

Clonality

Polyclonal

Ig Type

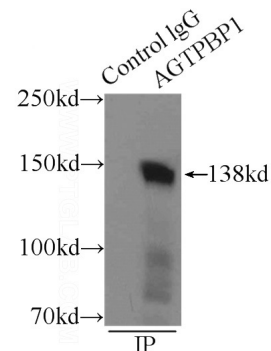
Rabbit IgG

Applications

ELISA, IHC, WB, IP, IF

Dilutions

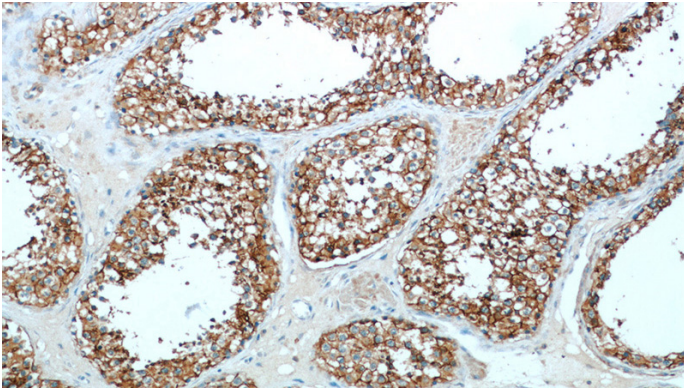
Recommended Dilution:



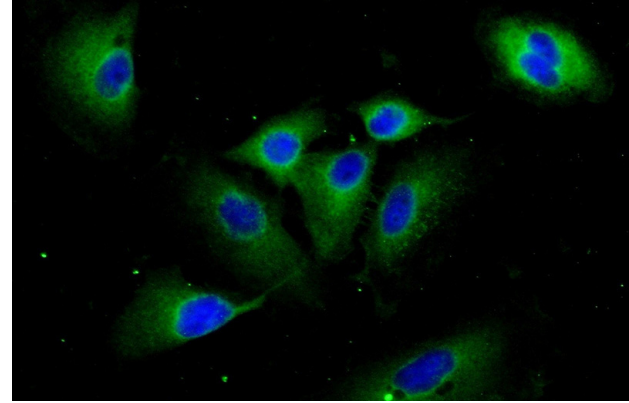
IP Result of anti-CCP1 (IP:Catalog No:109072, 3ug; Detection:Catalog No:109072 1:1000) with mouse testis tissue lysate 10000ug.

CCP1 antibody

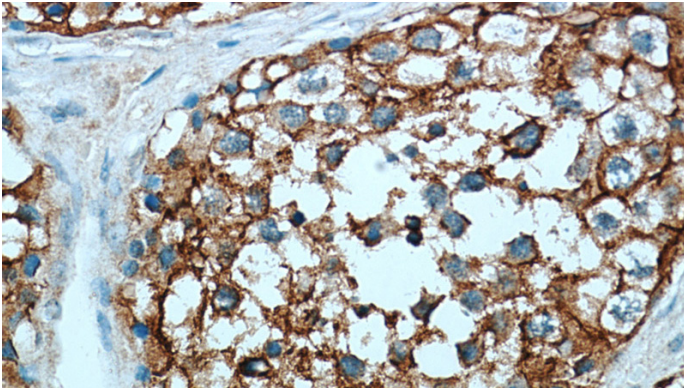
Catalog Number: 109072



Immunohistochemical of paraffin-embedded human testis using Catalog No:109072(CCP1 antibody) at dilution of 1:50 (under 40x lens)



Immunohistochemical of paraffin-embedded human testis using Catalog No:109072(CCP1 antibody) at dilution of 1:50 (under 10x lens)



Immunofluorescent analysis of (-20oc Ethanol) fixed A549 cells using Catalog No:109072(CCP1 Antibody) at dilution of 1:25 and Alexa Fluor 488-conjugated AffiniPure Goat Anti-Rabbit IgG(H+L)