

# Lifastuzumab vedotin reference antibody



Catalog Number: 177072

## Product name

Lifastuzumab vedotin reference antibody

## Specificity

Human NaPi2b / SLC34A2

## Antibody description

Anti-NaPi2b / SLC34A2 Antibody (Lifastuzumab vedotin)

## Preparation

Recombinant expression and purified from CHO cells.

## Formulation

0.1 M Pro-Ac, 20 mM Arg, pH 5.0

## Storage

-80°C for 2 years under sterile conditions; -20°C for 1 year under sterile conditions; Avoid repeated freeze-thaw cycles.

## Clonality

Monoclonal

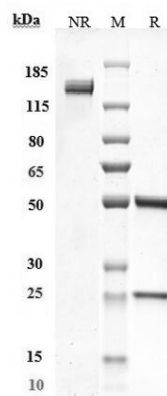
## Ig Type

IgG1

## Applications

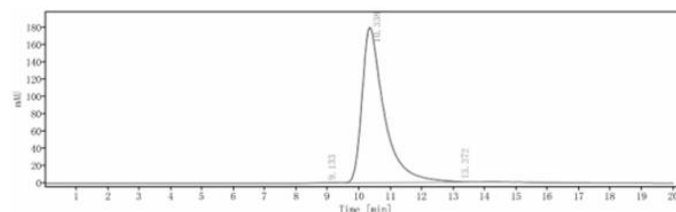
ELISA

## Validations



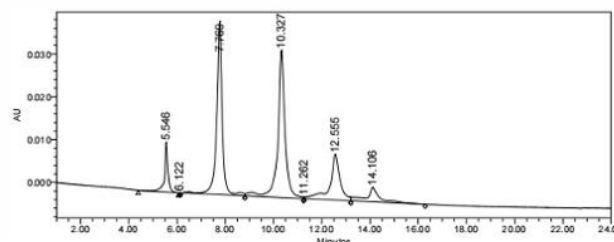
## SDS-PAGE

Anti-NaPi2b / SLC34A2 Antibody (Lifastuzumab vedotin) on SDS-PAGE under reducing (R) condition. The purity of the protein is greater than 95%.



## SEC-HPLC

The purity of Anti-NaPi2b / SLC34A2 Antibody (Lifastuzumab vedotin) is more than 95%, determined by SEC-HPLC.



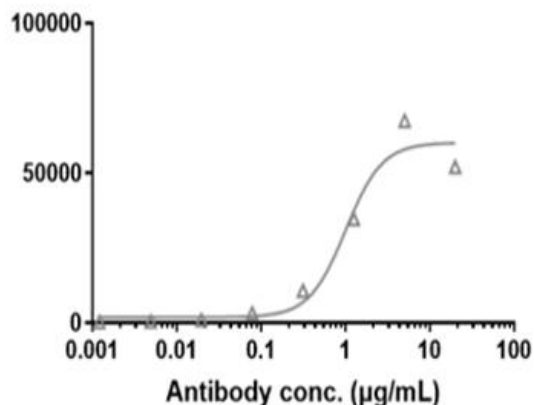
## HIC-HPLC

The drug-to-antibody ratio (DAR) of the Anti-NaPi2b / SLC34A2 Antibody (Lifastuzumab vedotin) is 3.7.

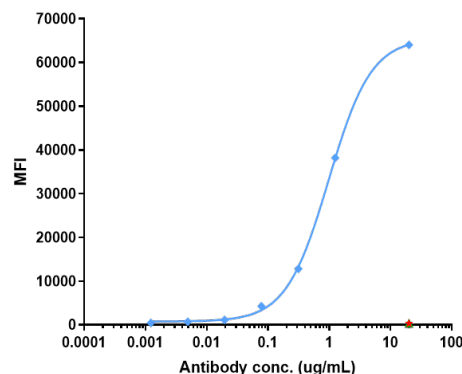
# Lifastuzumab vedotin reference antibody



Catalog Number: 177072



with FACS



Bioactivity: FACS

## ELISA

Human NaPi2b CHO-S Cells were stained with Anti-NaPi2b / SLC34A2 Antibody (Lifastuzumab vedotin) and negative control protein respectively, washed and then followed by PE and analyzed

Human NaPi2b HEK293 Cell Line were stained with Anti-NaPi2b / SLC34A2 Antibody (lifastuzumab vedotin) and negative control protein respectively, washed and then followed by PE and analyzed with FACS, The EC50 is 0.9793 ug/mL.