

Rat CD3e/CD3 epsilon (Fc Tag) recombinant protein



Catalog Number: 503072

General Information

Gene Name Synonym

Protein Cd3e

Protein Construction

A DNA sequence encoding the rat Cd3e (NP_001101610.1) (Tyr24-Asp103) was expressed with the Fc region of human IgG1 at the C-terminus.

Organism

Rat

Expression Host

Human Cells

QC Testing

Purity

> 95 % as determined by SDS-PAGE.

Endotoxin

<1.0 EU per μ g protein as determined by the LAL method.

Stability

Samples are stable for up to twelve months from date of receipt at -70°C

Predicted N terminal

Tyr 24

Molecular Mass

The recombinant rat Cd3e consists 318 amino acids and predicts a molecular mass of 36.1 kDa.

Formulation

Lyophilized from sterile PBS, pH 7.4.

1. 5 % trehalose and mannitol are added as protectants before lyophilization.

2. Please contact us for any concerns or special requirements.

Usage Guide

Storage

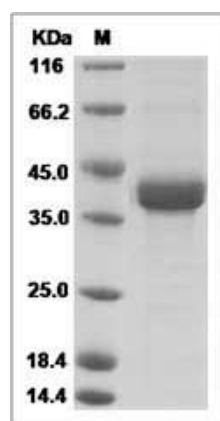
Store it under sterile conditions at -20°C to -80°C.

It is recommended that the protein be aliquoted for optimal storage. Avoid repeated freeze-thaw cycles.

Reconstitution

Adding sterile water, prepare a stock solution of 0.25 mg/ml. Concentration is measured by UV-Vis.

SDS-PAGE



Cd3e protein SDS-PAGE