

KISS1R-Specific antibody



Catalog Number: 112072

Product name

KISS1R-Specific antibody

Specificity

human; other species not tested.

Antibody description

KISS1R-Specific Rabbit Polyclonal antibody. Positive IF detected in MCF-7. Positive WB detected in SH-SY5Y cells, MCF7 cells. Observed molecular weight by Western-blot: 43-45kd,75kd

Preparation

This antibody was obtained by immunization of Peptide (Accession Number: NM_032551). Purification method: Antigen affinity purified.

Formulation

PBS with 0.02% sodium azide and 50% glycerol pH 7.3.

Storage

Store at -20°C. DO NOT ALIQUOT

Clonality

Polyclonal

Ig Type

Rabbit IgG

Applications

ELISA, WB, IF

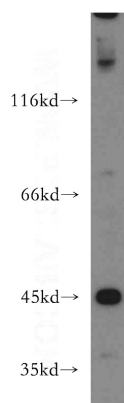
Dilutions

Recommended Dilution:

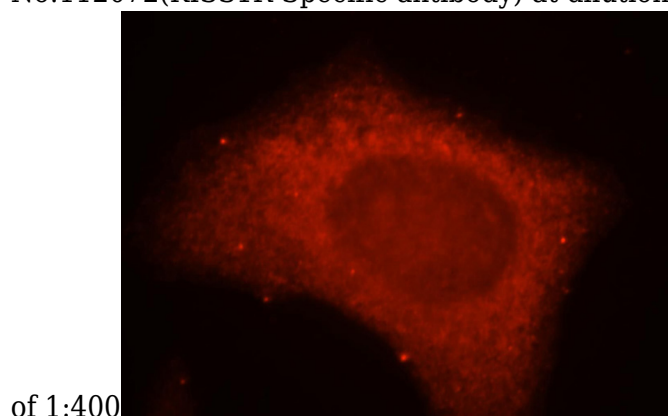
WB: 1:500-1:5000

IF: 1:10-1:100

Validations



SH-SY5Y cells were subjected to SDS PAGE followed by western blot with Catalog No:112072(KISS1R-Specific antibody) at dilution



of 1:400
Immunofluorescent analysis of MCF-7 cells, using KISS1R antibody Catalog No:112072 at 1:25 dilution and Rhodamine-labeled goat anti-rabbit IgG (red).