

# PLA2G4A Polyclonal Antibody



Catalog Number: 160072

## Product name

PLA2G4A Polyclonal Antibody

## Specificity

Human, Mouse

## Antibody description

Polyclonal antibody to PLA2G4A

## Preparation

Antigen: Recombinant fusion protein containing a sequence corresponding to amino acids 1-180 of human PLA2G4A (NP\_077734.1).

## Formulation

PBS with 0.02% sodium azide, 50% glycerol, pH7.3.

## Storage

Store at -20°C. Avoid freeze / thaw cycles.

## Clonality

Polyclonal

## Ig Type

Rabbit IgG

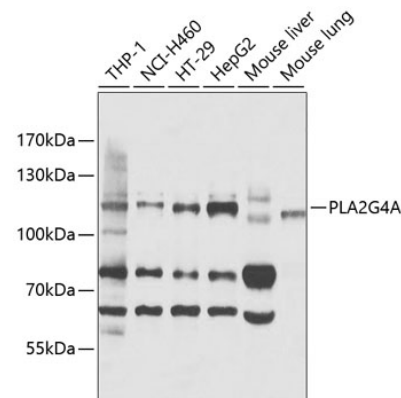
## Applications

WB

## Dilutions

WB 1:200 - 1:500

## Validations



## Western blot - PLA2G4A Polyclonal Antibody

Western blot analysis of extracts of various cell lines, using PLA2G4A antibody at 1:1000 dilution. Secondary antibody: HRP Goat Anti-Rabbit IgG (H+L) at 1:10000 dilution. Lysates/proteins: 25ug per lane. Blocking buffer: 3% nonfat dry milk in TBST. Detection: ECL Basic Kit. Exposure time: 20s.