

Human CTF1 (His tag) recombinant protein



Catalog Number: 518362

General Information

Gene Name Synonym

Cardiotrophin-1, CT-1, CTF1,

Protein Construction

A DNA sequence encoding the Human CTF1 Met1-Ala201 is expressed with a 6His tag at the N-terminus.

Organism

Human

Expression Host

E. coli

QC Testing

Purity

>95% as determined by SDS-PAGE.

Endotoxin

<1.0 EU per μ g protein as determined by the LAL

method.

Stability

Store for up to 6 months at -20°C

Formulation

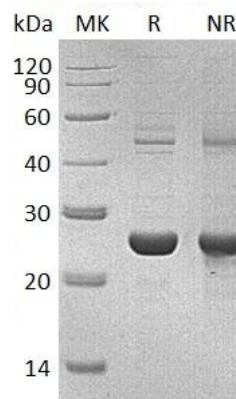
Supplied as a 0.2 μ m filtered solution of 20mM PB \square 150mM NaCl,pH7.4.

Usage Guide

Storage

Store at <-20°C, minimize freeze-thaw cycles.

SDS-PAGE



Human CTF1 (His tag) recombinant protein