

# PYGO2 antibody

Catalog Number: 114362

## Product name

PYGO2 antibody

## Specificity

Human, Mouse, Rat; other species not tested.

## Antibody description

PYGO2 Rabbit Polyclonal antibody. Positive IHC detected in human breast cancer tissue. Positive WB detected in MDA-MB-453s cells, C6 cells, HeLa cells. Observed molecular weight by Western-blot: 50 kDa

## Preparation

This antibody was obtained by immunization of PYGO2 recombinant protein (Accession Number: NM\_138300). Purification method: Antigen affinity purified.

## Formulation

PBS with 0.1% sodium azide and 50% glycerol pH 7.3.

## Storage

Store at -20°C. DO NOT ALIQUOT

## Clonality

Polyclonal

## Ig Type

Rabbit IgG

## Applications

ELISA, IHC, WB

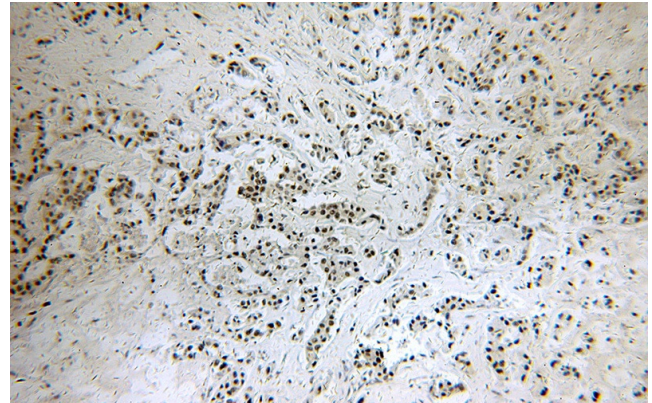
## Dilutions

Recommended Dilution:

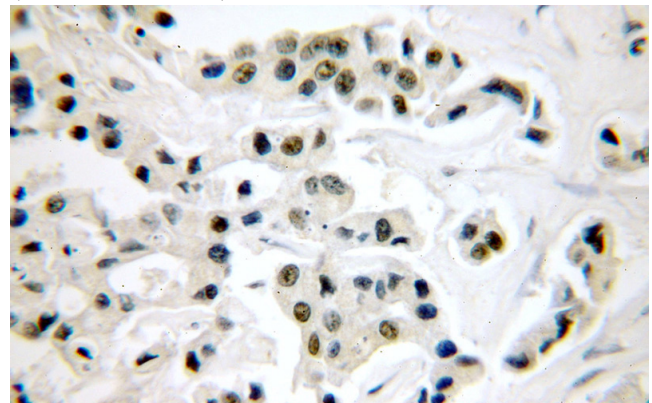
WB: 1:200-1:2000

IHC: 1:20-1:200

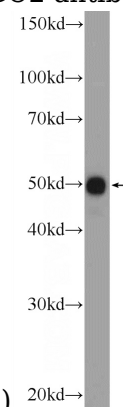
## Validations



Immunohistochemical of paraffin-embedded human breast cancer using Catalog No:114362(PYGO2 antibody) at dilution of 1:50 (under 10x lens)



Immunohistochemical of paraffin-embedded human breast cancer using Catalog No:114362(PYGO2 antibody) at dilution of 1:50



(under 40x lens)

MDA-MB-453s cells were subjected to SDS PAGE followed by western blot with Catalog

# PYGO2 antibody



Catalog Number: 114362

---

No:114362(PYGO2 Antibody) at dilution of 1:600