

# Anti-PLGF Rabbit antibody



Catalog Number: 168662

## Product name

Anti-PLGF Rabbit antibody

## Specificity

Human

## Antibody description

PLGF Rabbit monoclonal antibody

## Preparation

Antigen: A synthetic peptide of human PLGF

## Formulation

Supplied in 50nM Tris-Glycine(pH 7.4), 0.15M NaCl, 40%Glycerol, 0.01% sodium azide and 0.05% BSA.

## Storage

Store at 4°C short term. Aliquot and store at -20°C long term. Avoid freeze / thaw cycle.

## Clonality

Monoclonal

## Ig Type

Rabbit IgG

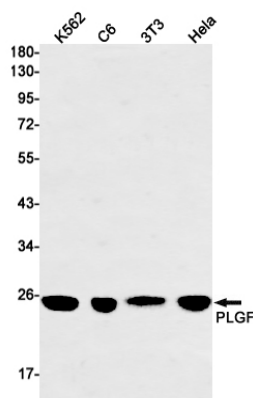
## Applications

WB

## Dilutions

1:2000

## Validations



Western blot detection of PLGF in K562,C6,3T3,HeLa cell lysates using PLGF Rabbit mAb(1:1000 diluted).Predicted band size:25kDa.Observed band size:25kDa.