

Mitofilin antibody

Catalog Number: 112662

Product name

Mitofilin antibody

Specificity

Human, Mouse; other species not tested.

Antibody description

Mitofilin Rabbit Polyclonal antibody. Positive FC detected in HEK-293T cells. Positive IHC detected in human gliomas tissue, human breast cancer tissue. Positive IF detected in HepG2 cells. Positive WB detected in multi-cells/tissue, COLO 320 cells, HEK-293 cells, HeLa cells, HepG2 cells, human brain tissue, MCF7 cells, Raji cells. Positive IP detected in Raji cells. Observed molecular weight by Western-blot: 87 kDa, 89 kDa

Preparation

This antibody was obtained by immunization of Mitofilin recombinant protein (Accession Number: XM_017003194). Purification method: Antigen affinity purified.

Formulation

PBS with 0.1% sodium azide and 50% glycerol pH 7.3.

Storage

Store at -20°C. DO NOT ALIQUOT

Clonality

Polyclonal

Ig Type

Rabbit IgG

Applications

ELISA, IHC, IF, WB, IP, FC

Dilutions

Recommended Dilution:

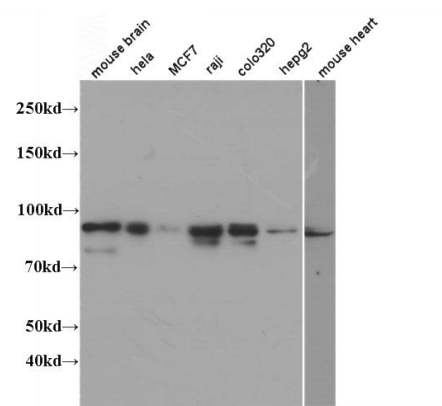
WB: 1:500-1:5000

IP: 1:500-1:5000

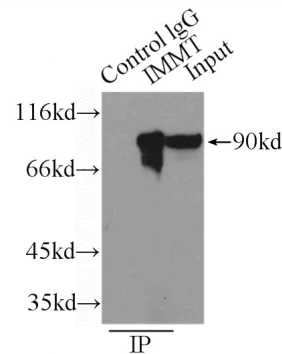
IHC: 1:20-1:200

IF: 1:20-1:200

Validations



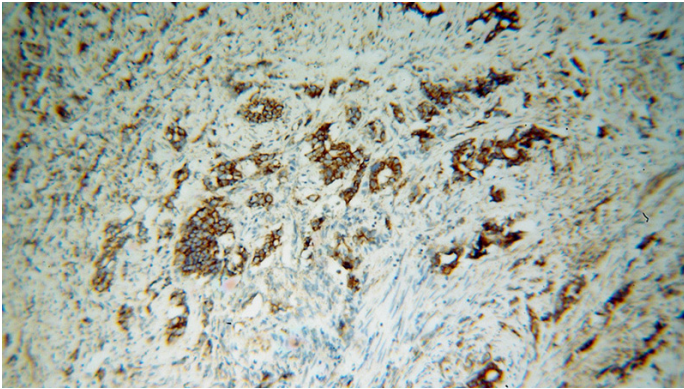
WB result of Catalog No:112662(IMMT antibody) at dilution of 1:1000.



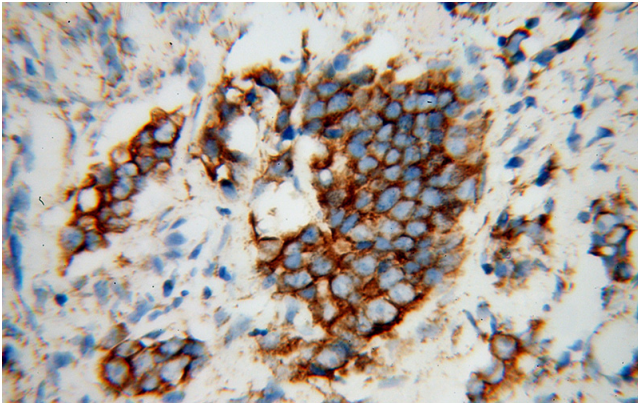
IP Result of anti-IMMT (IP:Catalog No:112662, 3ug; Detection:Catalog No:112662 1:1000) with Raji cells lysate 3800ug.

Mitofilin antibody

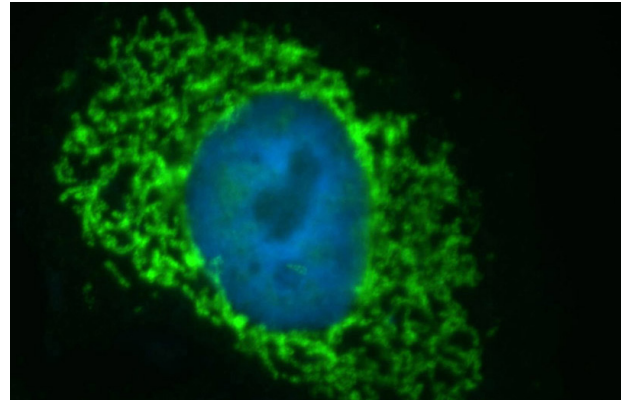
Catalog Number: 112662



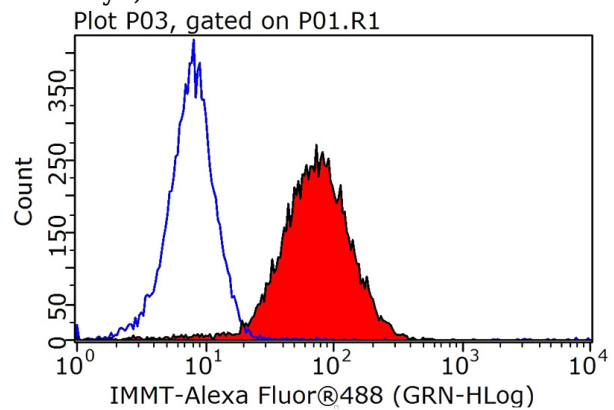
Immunohistochemical of paraffin-embedded human gliomas using Catalog No:112662(IMMT antibody) at dilution of 1:100 (under 10x lens)



Immunohistochemical of paraffin-embedded human gliomas using Catalog No:112662(IMMT antibody) at dilution of 1:100 (under 40x lens)



Immunofluorescent analysis of HepG2 cells, using IMMT antibody Catalog No:112662 at 1:50 dilution and FITC-labeled donkey anti-rabbit IgG(green). Blue pseudocolor = DAPI (fluorescent DNA dye).



1X10⁶ HEK-293T cells were stained with .2ug IMMT antibody (Catalog No:112662, red) and control antibody (blue). Fixed with 90% MeOH blocked with 3% BSA (30 min). Alexa Fluor 488-conjugated AffiniPure Goat Anti-Rabbit IgG(H+L) with dilution 1:1000.