

# Centromere protein R antibody



Catalog Number: 109262

## Product name

Centromere protein R antibody

IHC: 1:20-1:200

IF: 1:50-1:500

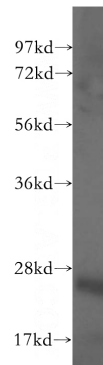
## Specificity

Human; other species not tested.

## Validations

## Antibody description

Centromere protein R Rabbit Polyclonal antibody. Positive WB detected in HeLa cells. Positive IHC detected in human colon cancer tissue. Positive IF detected in HeLa cells. Observed molecular weight by Western-blot: 25 kDa



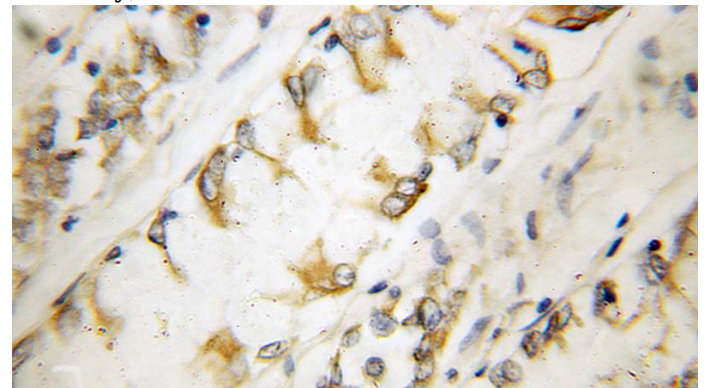
## Preparation

This antibody was obtained by immunization of Centromere protein R recombinant protein (Accession Number: NM\_014288). Purification method: Antigen affinity purified.

HeLa cells were subjected to SDS PAGE followed by western blot with Catalog No:109262(ITGB3BP antibody) at dilution of 1:600

## Formulation

PBS with 0.1% sodium azide and 50% glycerol pH 7.3.



## Storage

Store at -20°C. DO NOT ALIQUOT

## Clonality

Polyclonal

Immunohistochemical of paraffin-embedded human colon cancer using Catalog No:109262(ITGB3BP antibody) at dilution of 1:100 (under 25x lens)

## Ig Type

Rabbit IgG

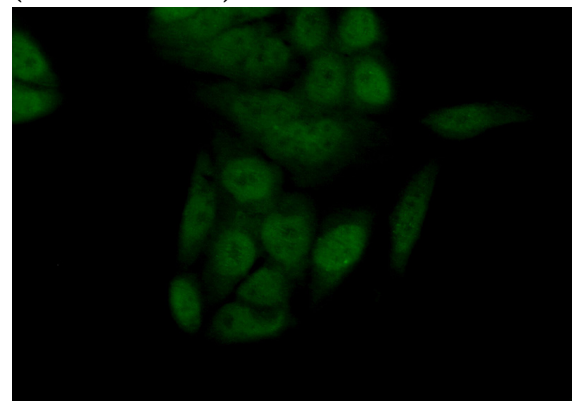
## Applications

ELISA, WB, IHC, IF

## Dilutions

Recommended Dilution:

WB: 1:200-1:2000



Immunofluorescent analysis of (10%

# Centromere protein R antibody



Catalog Number: 109262

---

Formaldehyde) fixed HeLa cells using Catalog  
No:109262(Centromere protein R Antibody) at

dilution of 1:50 and Alexa Fluor 488-conjugated  
AffiniPure Goat Anti-Rabbit IgG(H+L)