

# ZP3 antibody

Catalog Number: 117262

## Product name

ZP3 antibody

IP: 1:200-1:2000

IHC: 1:20-1:200

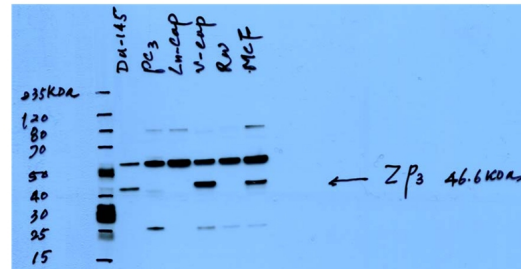
## Specificity

Human; other species not tested.

## Validations

## Antibody description

ZP3 Rabbit Polyclonal antibody. Positive IHC detected in human breast cancer tissue, human prostate cancer tissue. Positive IP detected in HeLa cells. Positive WB detected in multi-cells. Observed molecular weight by Western-blot: 46 kDa, 60 kDa



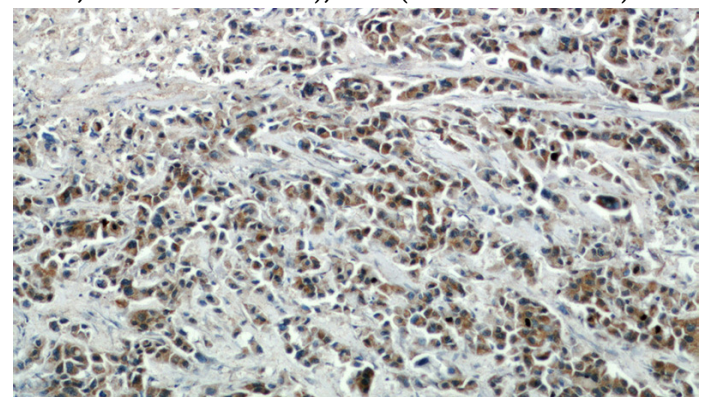
## Preparation

This antibody was obtained by immunization of ZP3 recombinant protein (Accession Number: NM\_007155). Purification method: Antigen affinity purified.

WB result of Catalog No:117262(ZP3) from Dr. Soory. (Target band 41-47kd,56kd(Glycosylated form, PMID:19700799),83kd(PMID: 1577197)).

## Formulation

PBS with 0.1% sodium azide and 50% glycerol pH 7.3.



## Storage

Store at -20°C. DO NOT ALIQUOT

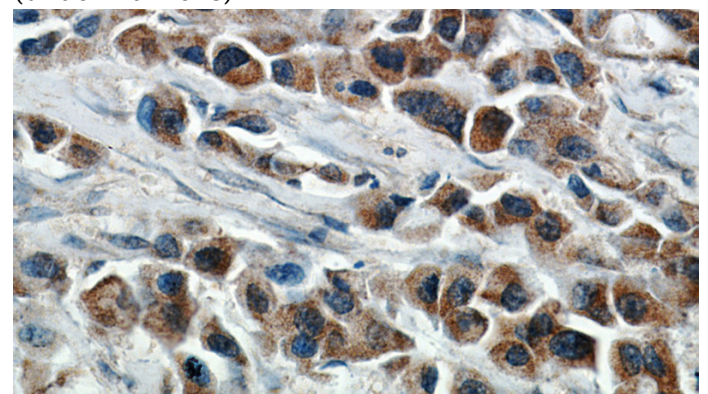
## Clonality

Polyclonal

Immunohistochemical of paraffin-embedded human breast cancer using Catalog No:117262(ZP3 antibody) at dilution of 1:50 (under 10x lens)

## Ig Type

Rabbit IgG



## Applications

ELISA, IHC, WB, IP

## Dilutions

Recommended Dilution:

WB: 1:200-1:2000

Immunohistochemical of paraffin-embedded

# ZP3 antibody

Catalog Number: 117262

---

human breast cancer using Catalog No:117262(ZP3 antibody) at dilution of 1:50

IP Result of anti-ZP3 (IP:Catalog No:117262, 4ug; Detection:Catalog No:117262 1:500) with HeLa cells lysate 1600ug.

