

Anti-GTPase HRAS Rabbit antibody



Catalog Number: 167262

Product name

Rabbit IgG

Anti-GTPase HRAS Rabbit antibody

Applications

Specificity

WB, ICC/IF, FC, IP

Human, Mouse, Rat

Dilutions

Antibody description

WB: 1/1000

GTPase HRAS Rabbit polyclonal antibody

ICC/IF: 1/50

Preparation

FC: 1/50

Antigen: Recombinant protein of human RAS

IP: 1/20

Formulation

Supplied in 50nM Tris-Glycine(pH 7.4), 0.15M NaCl, 40%Glycerol, 0.01% sodium azide and 0.05% BSA.

Validations

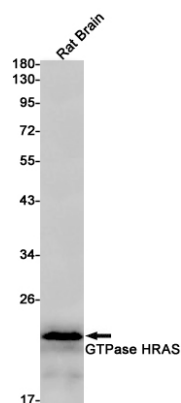
Storage

Store at -20°C. Stable for 12 months from date of receipt.

Clonality

Polyclonal

Ig Type



Western blot detection of RAS in Rat Brain lysates using RAS Rabbit pAb(1:1000 diluted). Predicted band size:21kDa. Observed band size:21kDa.