

Anti-POLR3E antibody



Catalog Number: 176262

Product name

Anti-POLR3E antibody

Specificity

Human, Mouse

Antibody description

Rabbit polyclonal antibody to POLR3E

Preparation

This antigen of this antibody was the antiserum was produced against synthesized peptide derived from human rpc5. aa range:191-240

Formulation

Liquid, Liquid in PBS containing 50% glycerol, 0.5% BSA and 0.02% sodium azide.

Storage

Store at +4°C after thawing. Aliquot store at -20°C or -80°C. Avoid repeated freeze / thaw cycles.

Clonality

Polyclonal

Ig Type

Rabbit IgG

Applications

WB, IHC-P, IF

Dilutions

WB: 1:500-1:2000

IHC-P: 1:100-1:300

IF: 1:100-1:500

Validations

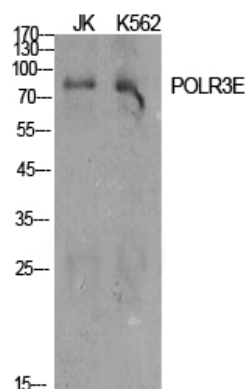


Fig1.; Western Blot analysis of various cells using POLR3E Polyclonal Antibody cells nucleus extracted by Minute TM Cytoplasmic and Nuclear Fractionation kit (SC-003, Inventbiotech, MN, USA).