

Anti-C2orf42 antibody



Catalog Number: 175262

Product name

Anti-C2orf42 antibody

Specificity

Human, Mouse, Rat, Chicken, Pig, Cow, Horse, Sheep

Antibody description

Rabbit polyclonal antibody to C2orf42

Preparation

This antigen of this antibody was klh conjugated synthetic peptide derived from human c2orf42 1-100/574

Formulation

Liquid, 0.01M TBS(pH7.4) with 1% BSA, 0.03% Proclin300 and 50% Glycerol.

Storage

Store at -20°C for one year. Avoid repeated freeze/thaw cycles. The lyophilized antibody is stable at room temperature for at least one month and for greater than a year when kept at -20°C. When reconstituted in sterile pH 7.4 0.01M PBS or diluent of antibody the antibody is stable for at least two weeks at 2-4°C.

Clonality

Polyclonal

Ig Type

Rabbit IgG

Applications

WB

Dilutions

WB:1:500-2000

Validations

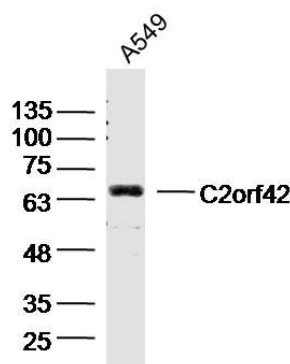


Fig1: Sample: A549 Cell (Human) Lysate at 30 ug; Primary: Anti- C2orf42 at 1/300 dilution; Secondary: IRDye800CW Goat Anti-Rabbit IgG at 1/20000 dilution; Predicted band size: 64kD; Observed band size: 64kD