

# Anti-phospho-PKC zeta (Thr410)/PKC lambda (Thr412) Rabbit antibody



Catalog Number: 167962

## Product name

Anti-phospho-PKC zeta (Thr410)/PKC lambda (Thr412) Rabbit antibody

## Specificity

Human, Mouse, Rat

## Antibody description

phospho-PKC zeta (Thr410)/PKC lambda (Thr412) Rabbit monoclonal antibody

## Preparation

Antigen: A synthetic phosphopeptide corresponding to residues surrounding Thr410 of human PKC zeta

## Formulation

50nM Tris-Glycine(pH 7.4), 0.15M NaCl, 40%Glycerol, 0.01% sodium azide and 0.05% BSA

## Storage

Store at 4°C short term. Store at -20°C long term. Avoid freeze / thaw cycle.

## Clonality

Monoclonal

## Ig Type

Rabbit IgG

## Applications

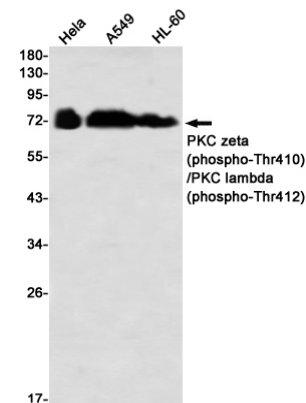
WB, IHC-P

## Dilutions

WB: 1/1000

IHC: 1/20

## Validations



Western blot detection of PKC zeta (phospho-Thr410)/PKC lambda (phospho-Thr412) in HeLa, A549, HL-60 using PKC zeta (phospho-Thr410)/PKC lambda (phospho-Thr412) Rabbit mAb(1:1000 diluted)