

Anti-M6PR Rabbit antibody



Catalog Number: 166962

Product name

Anti-M6PR Rabbit antibody

WB: 1/5000-1/20000

IHC: 1/50-1/200

Specificity

Human, Mouse, Rat

ICC/IF: 1/50-1/200

IP: 1/30

FC: 1/100

Antibody description

M6PR Rabbit polyclonal antibody

Validations

Preparation

Antigen: A synthesized peptide derived from human M6PR

Formulation

Rabbit IgG in phosphate buffered saline , pH 7.4, 150mM NaCl, 0.02% sodium azide and 50% glycerol.

Storage

Store at 4°C short term. Store at -20°C long term. Avoid freeze / thaw cycle.

Clonality

Polyclonal

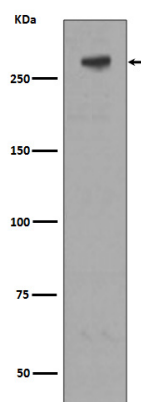
Ig Type

Rabbit IgG

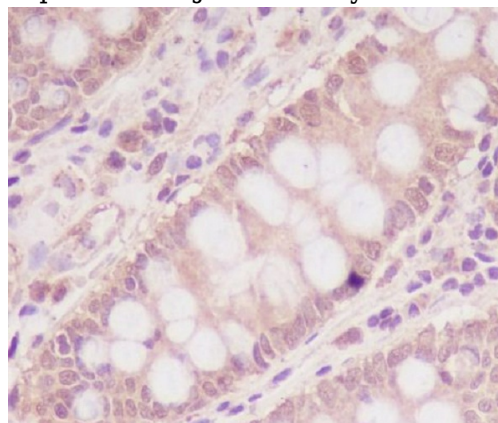
Applications

WB, IHC-P, ICC/IF, IP, FC

Dilutions



Western blot analysis of extracts of M6PR expression in Jurkat cell lysate.



Immunohistochemical analysis of paraffin-embedded human colon, using M6PR Antibody.