

# IVD antibody

Catalog Number: 111962

## Product name

IVD antibody

IP: 1:200-1:1000

IHC: 1:20-1:200

## Specificity

Human, Mouse, Rat; other species not tested.

## Antibody description

IVD Rabbit Polyclonal antibody. Positive IP detected in MCF-7 cells. Positive WB detected in MCF-7 cells, human brain tissue, Transfected HEK-293 cells. Positive IHC detected in human liver tissue. Observed molecular weight by Western-blot: 41 kDa

## Preparation

This antibody was obtained by immunization of IVD recombinant protein (Accession Number: NM\_002225). Purification method: Antigen affinity purified.

## Formulation

PBS with 0.1% sodium azide and 50% glycerol pH 7.3.

## Storage

Store at -20°C. DO NOT ALIQUOT

## Clonality

Polyclonal

## Ig Type

Rabbit IgG

## Applications

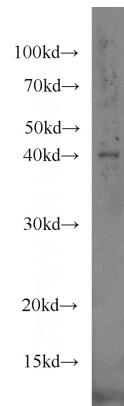
ELISA, IHC, WB, IP

## Dilutions

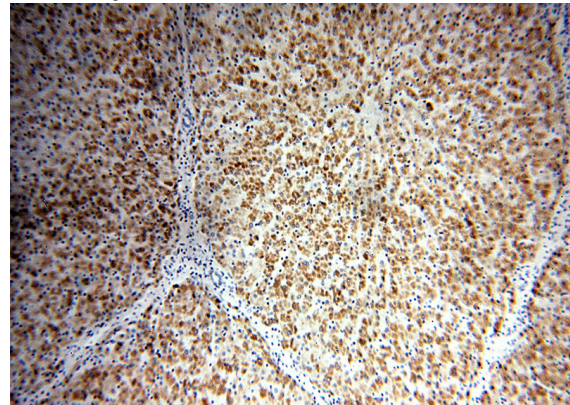
Recommended Dilution:

WB: 1:200-1:1000

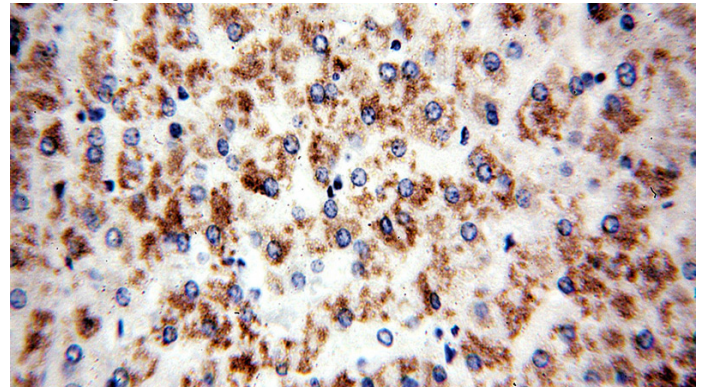
## Validations



MCF7 cells were subjected to SDS PAGE followed by western blot with Catalog No:111962(IVD antibody) at dilution of 1:300



Immunohistochemical of paraffin-embedded human liver using Catalog No:111962(IVD antibody) at dilution of 1:50 (under 10x lens)

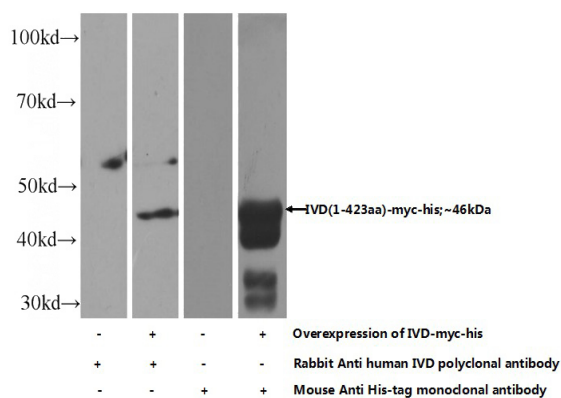


Immunohistochemical of paraffin-embedded human liver using Catalog No:111962(IVD antibody) at dilution of 1:50 (under 10x lens)

# IVD antibody

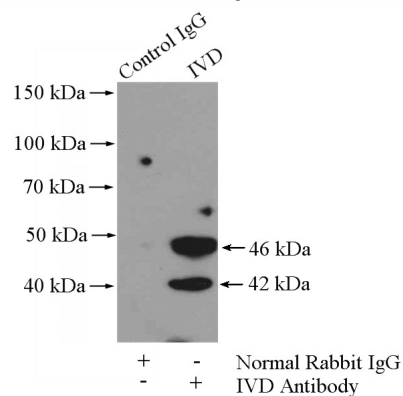
Catalog Number: 111962

antibody) at dilution of 1:50 (under 40x lens)



Transfected HEK-293 cells were subjected to SDS PAGE followed by western blot with Catalog

No:111962(IVD Antibody) at dilution of 1:500



IP Result of anti-IVD (IP:Catalog No:111962, 4ug; Detection:Catalog No:111962 1:300) with MCF-7 cells lysate 800ug.