

## Product name

CRIPT antibody

IF: 1:20-1:200

## Specificity

Human, Mouse, Rat; other species not tested.

## Antibody description

CRIPT Rabbit Polyclonal antibody. Positive IF detected in L02 cells. Positive WB detected in L02 cells. Positive IP detected in L02 cells. Observed molecular weight by Western-blot: 15 kDa

## Preparation

This antibody was obtained by immunization of CRIPT recombinant protein (Accession Number: NM\_014171). Purification method: Antigen affinity purified.

## Formulation

PBS with 0.1% sodium azide and 50% glycerol pH 7.3.

## Storage

Store at -20°C. DO NOT ALIQUOT

## Clonality

Polyclonal

## Ig Type

Rabbit IgG

## Applications

ELISA, WB, IP, IF

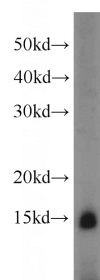
## Dilutions

Recommended Dilution:

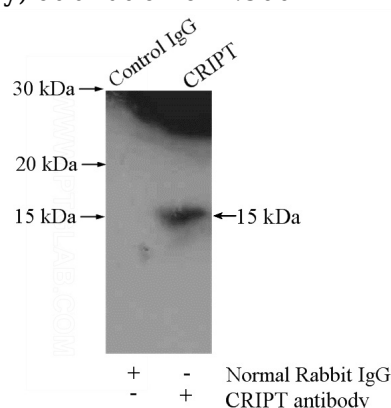
WB: 1:200-1:2000

IP: 1:200-1:2000

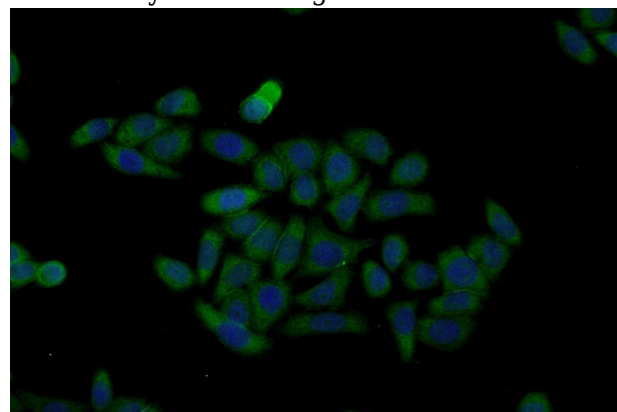
## Validations



L02 cells were subjected to SDS PAGE followed by western blot with Catalog No:109562(CRIPT antibody) at dilution of 1:500



IP Result of anti-CRIPT (IP:Catalog No:109562, 4ug; Detection:Catalog No:109562 1:500) with L02 cells lysate 1800ug.



Immunofluorescent analysis of L02 cells using Catalog No:109562(CRIPT Antibody) at dilution of 1:50 and Alexa Fluor 488-conjugated AffiniPure

Goat Anti-Rabbit IgG(H+L)