

Anti-GPS2 antibody



Catalog Number: 142562

Product name

Anti-GPS2 antibody

Specificity

Human GPS2

Antibody description

Rabbit Polyclonal to Human GPS2

Preparation

Produced in rabbits immunized with a synthetic peptide corresponding to the center region of the Human GPS2, and purified by antigen affinity chromatography.

Formulation

0.2 µm filtered solution in PBS

Storage

This antibody can be stored at 2°C-8°C for one month without detectable loss of activity. Antibody products are stable for twelve months from date of receipt when stored at -20°C to -80°C.

Preservative-Free.

Sodium azide is recommended to avoid contamination (final concentration 0.05%-0.1%). It

is toxic to cells and should be disposed of properly. Avoid repeated freeze-thaw cycles.

Clonality

Polyclonal

Ig Type

Rabbit IgG

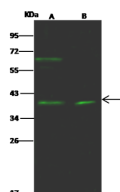
Applications

WB

Dilutions

WB: 5-20 µg/ml

Validations



Lanes	A	B
Items		
Sample (whole cell lysate)	A431	HeLa
Sample Volume (µg/lane)	30	30
Gel	13% SDS-PAGE reducing gel	
Recommended Concentration	5-20 µg/ml	
Secondary Antibody	Dylight 800-labeled Antibody to Rabbit IgG (H+L), at 1:5000 dilution.	
Developed using Odyssey imaging system.		
Explanation	Predicted band size : 37 kDa Observed band size : 39 kDa Additional bands at : 64 kDa [We are unsure as to the identity of these extra bands.]	

Human GPS2 Western blot (WB) 14629