

CLPP antibody



Catalog Number: 107162

Product name

CLPP antibody

Specificity

Human; other species not tested.

Antibody description

CLPP Mouse Monoclonal antibody. Positive WB detected in human heart tissue, pig heart tissue. Observed molecular weight by Western-blot: 30 kDa

Preparation

This antibody was obtained by immunization of CLPP recombinant protein (Accession Number: NM_006012). Purification method: Protein A purified.

Formulation

PBS with 0.02% sodium azide and 50% glycerol pH 7.3.

Storage

Store at -20°C. DO NOT ALIQUOT

Clonality

Monoclonal

Ig Type

Mouse IgG3

Applications

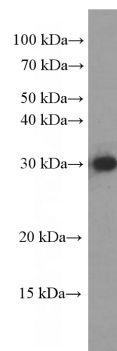
ELISA, WB

Dilutions

Recommended Dilution:

WB: 1:500-1:5000

Validations



human heart tissue were subjected to SDS PAGE followed by western blot with Catalog No:107162(CLPP Antibody) at dilution of 1:1000